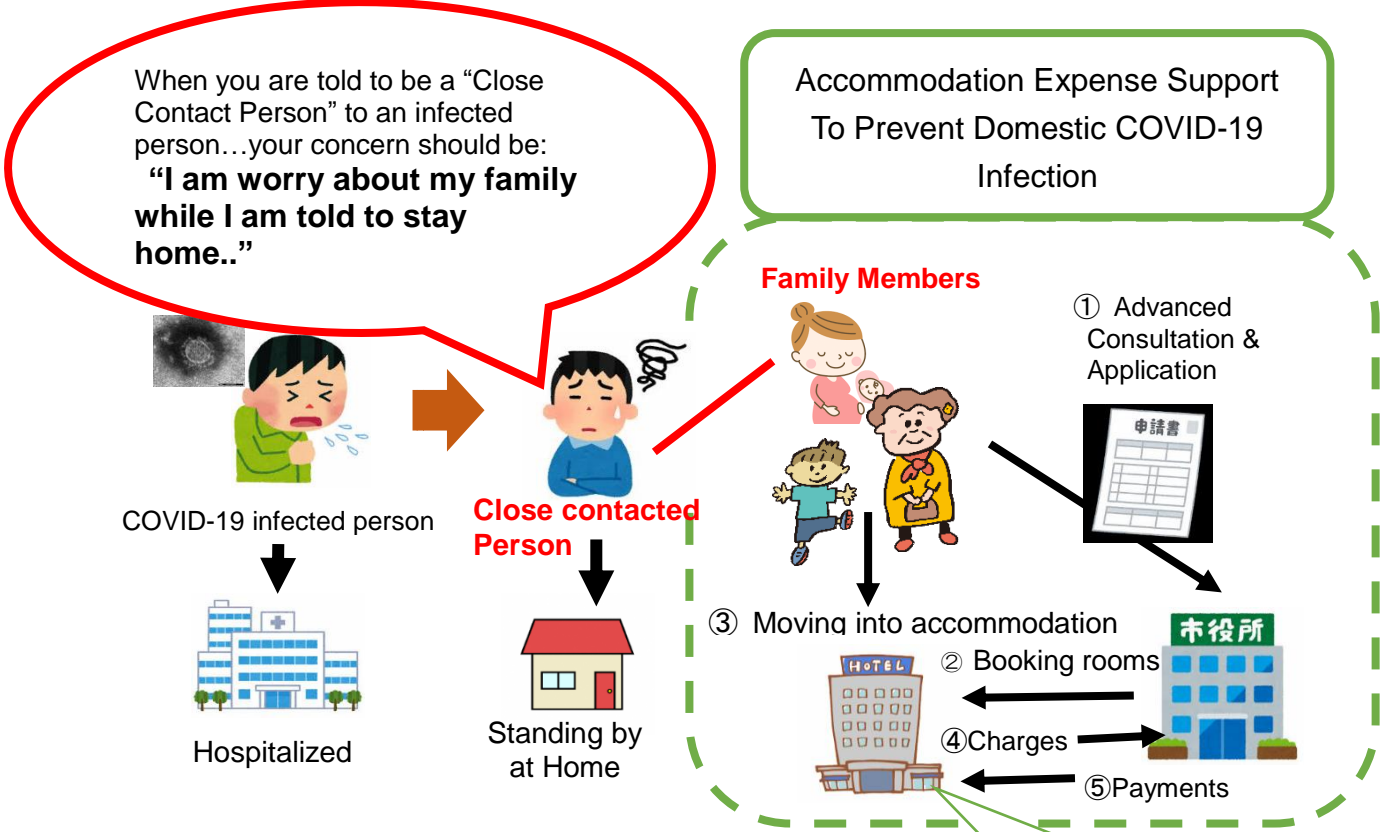


# Accommodation Expense Support To Prevent Domestic COVID-19 Infection



If you are under this situation, to prevent domestic COVID-19 infection, your family members' **accommodation expense will be covered** while **they will stay apart from you**. (There is an amount limit)

Rest of the family members can be free of contact to "Close contact household member" for the required period. They are even allowed to go to work from the accommodation.

**Eligibility:** Family members have to be registered as Okinawa City citizen and also **completely satisfy** following conditions:

1. Same household members of those who were identified as a "Close Contact Person" to a COVID-19 infected person.
2. Any of them are NOT identified as "Close Contacted Person" to a COVID-19 infected person at that point.
3. Any of them have symptoms to be considered as COVID-19 infected person (e.g. fever etc.) at that point.

**Period of Accommodation:** Up to 14 days (Until "Close Contacted Household Member" finishes their standing by at home period.)

**Accommodation:** One of those such as hotels that are located in Okinawa City (Name of accommodation will be informed at application)

**Amount Covered:** Up to ¥5,000 per person

\*If the amount of charge does not exceed ¥5,000, it is covered up to the amount.

**How to Apply:** Please contact below **in advance for consultation**.

**Contact:** *Shimin Kenko Ka* (Residents Health Division), Okinawa City Hall  
 [Weekdays] 8:30-17:15 TEL: 098-939-1212 (Ext.2262/2264)  
 [Weekends & Japanese Holidays] 10:00-17:00 TEL: 098-939-1212

