

GC/MS-SIMクロマトグラム

採取日：2013年7月2日

試料名：ドラム缶内容物 No.14

Quantify Sample Report MassLynx 4.0 SCN503

Dataset: ¥¥Kh213¥results¥N1ALU 43-56.qld

Last Altered: 2013年7月25日 13:55:18 東京 (標準時)

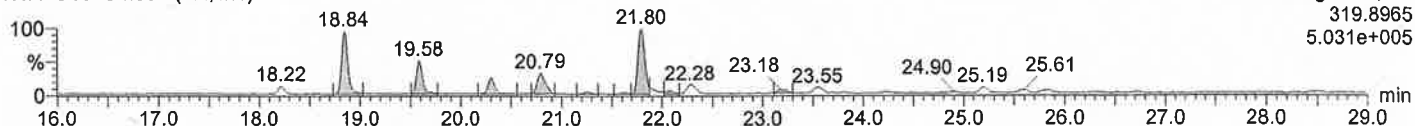
Printed: 2013年7月25日 13:56:00 東京 (標準時)

Date: 25-Jul-2013, Time: 02:09:00, Description: N774-14

TeCDD

N1ALU55 Smooth(Mn,1x1)

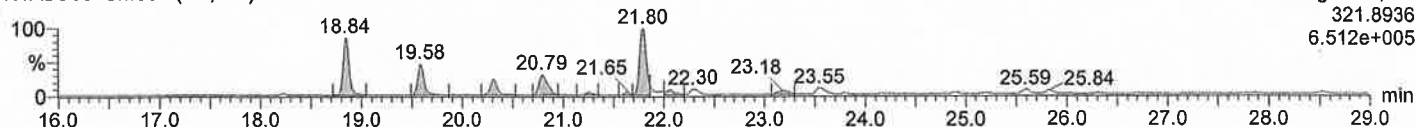
Voltage SIR, EI+
319.8965
5.031e+005



TeCDD

N1ALU55 Smooth(Mn,1x1)

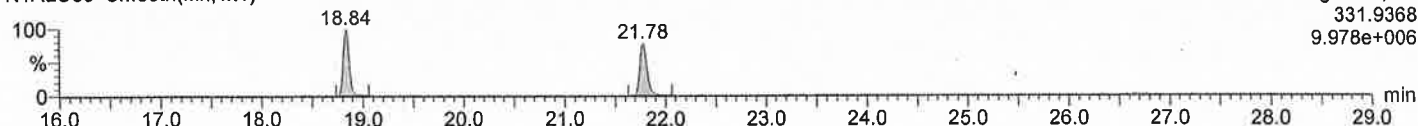
Voltage SIR, EI+
321.8936
6.512e+005



¹³C-TeCDD

N1ALU55 Smooth(Mn,1x1)

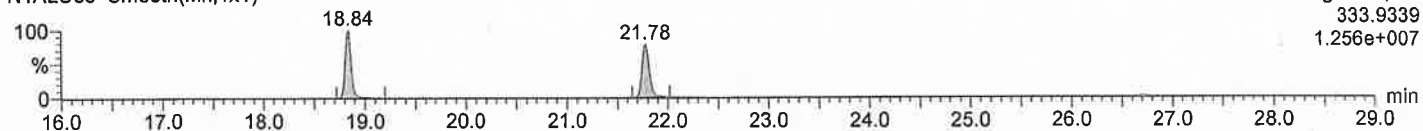
Voltage SIR, EI+
331.9368
9.978e+006



¹³C-TeCDD

N1ALU55 Smooth(Mn,1x1)

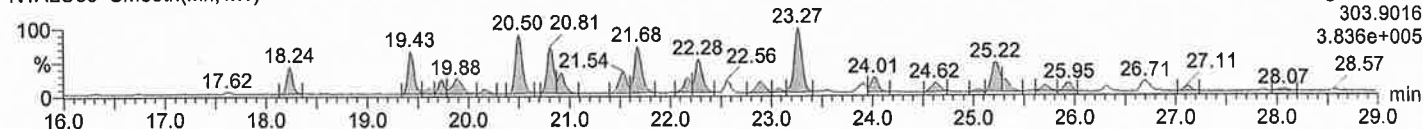
Voltage SIR, EI+
333.9339
1.256e+007



TeCDF

N1ALU55 Smooth(Mn,1x1)

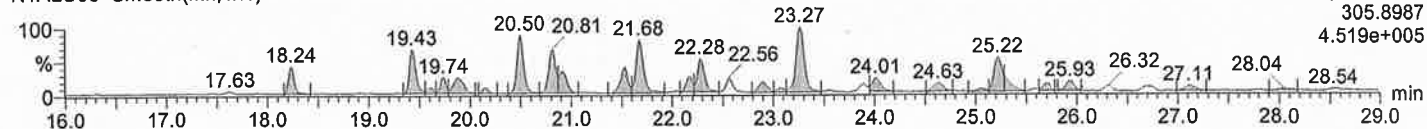
Voltage SIR, EI+
303.9016
3.836e+005



TeCDF

N1ALU55 Smooth(Mn,1x1)

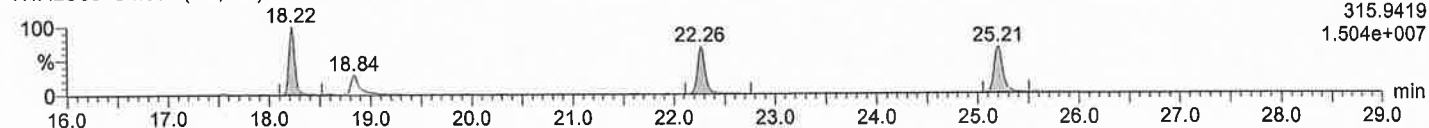
Voltage SIR, EI+
305.8987
4.519e+005



¹³C-TeCDF

N1ALU55 Smooth(Mn,1x1)

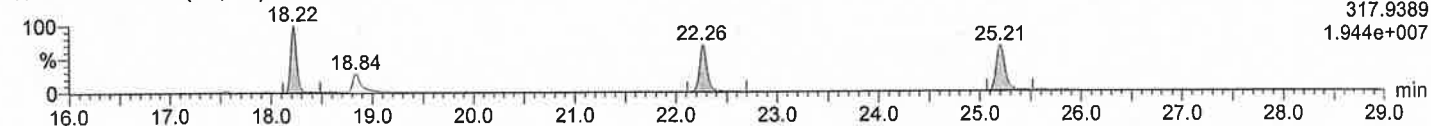
Voltage SIR, EI+
315.9419
1.504e+007



¹³C-TeCDF

N1ALU55 Smooth(Mn,1x1)

Voltage SIR, EI+
317.9389
1.944e+007



Quantify Sample Report MassLynx 4.0 SCN503

Dataset: ¥¥Kh213¥results¥N1ALU 43-56.qld

Last Altered: 2013年7月25日 13:55:18 東京 (標準時)

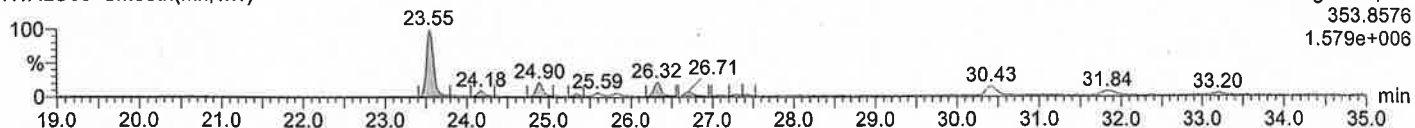
Printed: 2013年7月25日 13:56:00 東京 (標準時)

Date: 25-Jul-2013, Time: 02:09:00, Description: N774-14

PeCDDs

N1ALU55 Smooth(Mn,1x1)

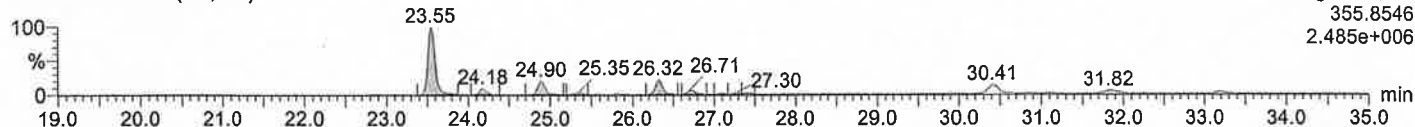
Voltage SIR,EI+
353.8576
1.579e+006



PeCDDs

N1ALU55 Smooth(Mn,1x1)

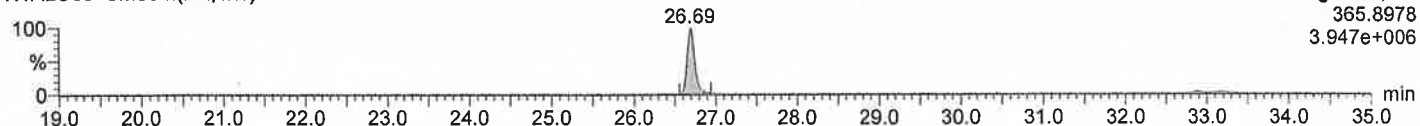
Voltage SIR,EI+
355.8546
2.485e+006



¹³C-PeCDD

N1ALU55 Smooth(Mn,1x1)

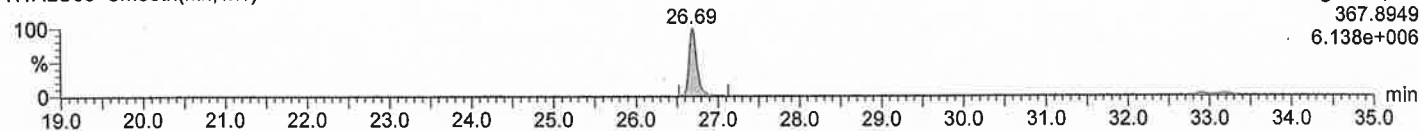
Voltage SIR,EI+
365.8978
3.947e+006



¹³C-PeCDD

N1ALU55 Smooth(Mn,1x1)

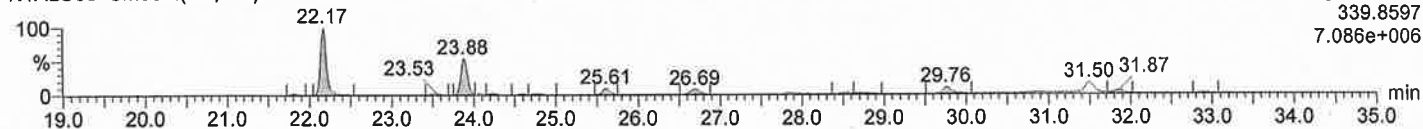
Voltage SIR,EI+
367.8949
6.138e+006



PeCDFs

N1ALU55 Smooth(Mn,1x1)

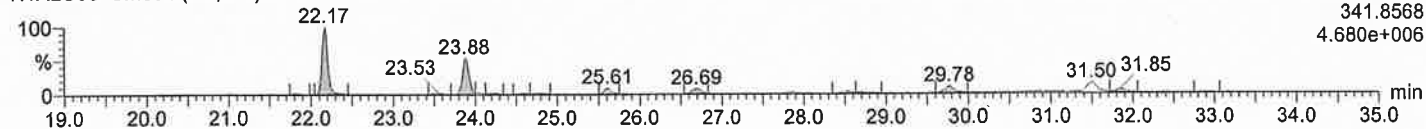
Voltage SIR,EI+
339.8597
7.086e+006



PeCDFs

N1ALU55 Smooth(Mn,1x1)

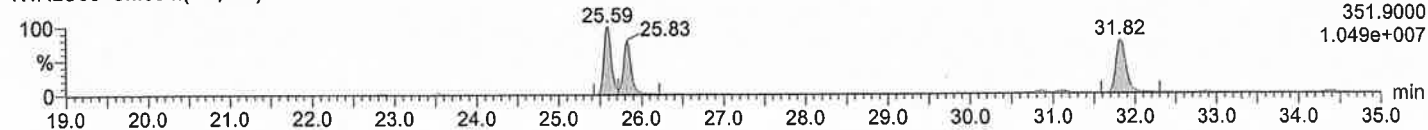
Voltage SIR,EI+
341.8568
4.680e+006



¹³C-PeCDF

N1ALU55 Smooth(Mn,1x1)

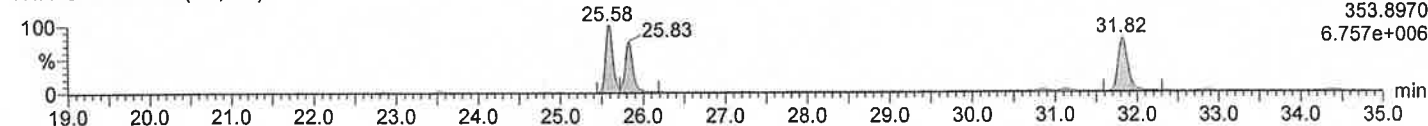
Voltage SIR,EI+
351.9000
1.049e+007



¹³C-PeCDF

N1ALU55 Smooth(Mn,1x1)

Voltage SIR,EI+
353.8970
6.757e+006



Quantify Sample Report MassLynx 4.0 SCN503

Dataset: ¥¥Kh213¥results¥N1ALU 43-56.qld

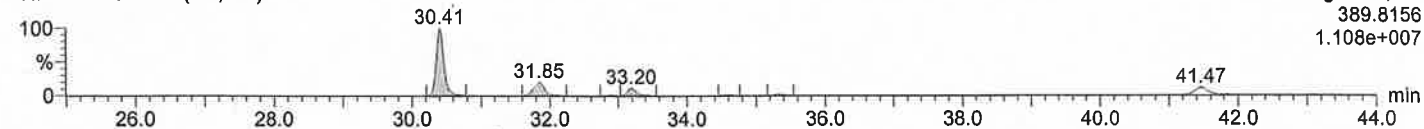
Last Altered: 2013年7月25日 13:55:18 東京 (標準時)

Printed: 2013年7月25日 13:56:00 東京 (標準時)

Date: 25-Jul-2013, Time: 02:09:00, Description: N774-14

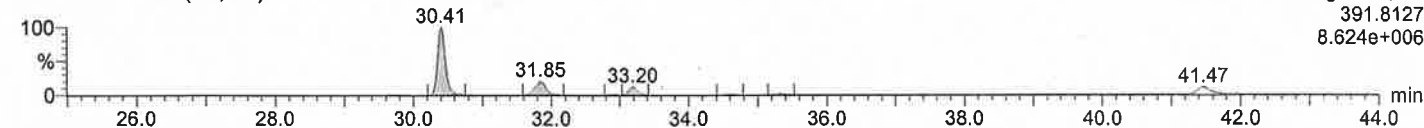
HxCDDs

N1ALU55 Smooth(Mn,1x1)



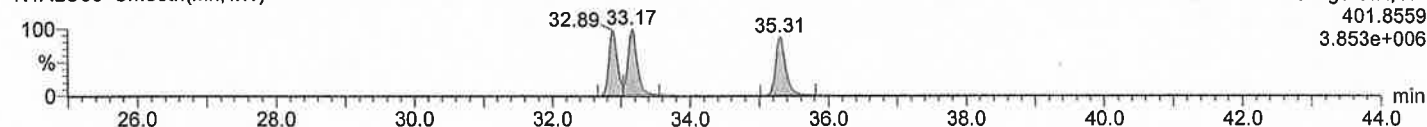
HxCDDs

N1ALU55 Smooth(Mn,1x1)



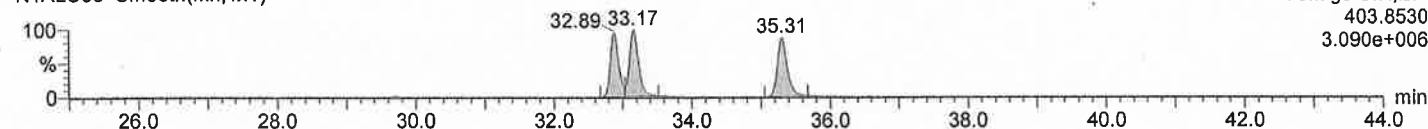
¹³C-HxCDD

N1ALU55 Smooth(Mn,1x1)



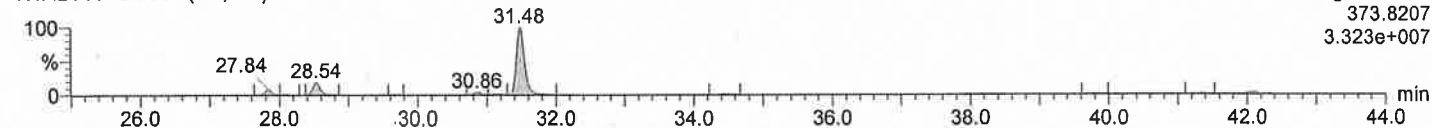
¹³C-HxCDD

N1ALU55 Smooth(Mn,1x1)



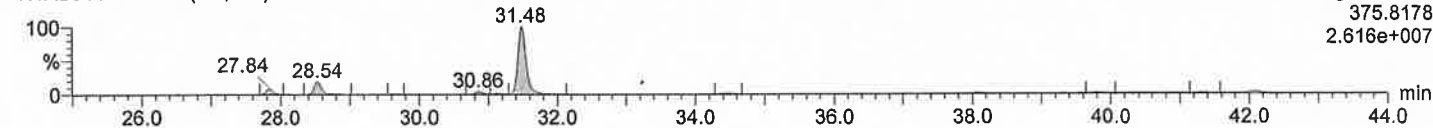
HxCDFs

N1ALU55 Smooth(Mn,1x1)



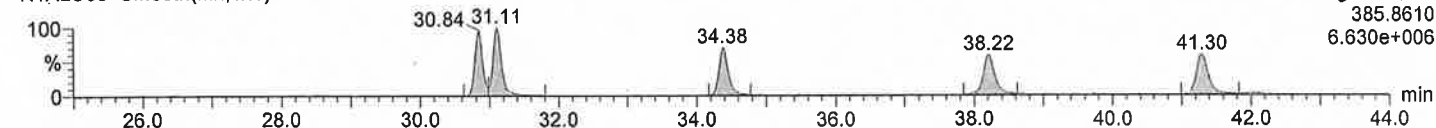
HxCDFs

N1ALU55 Smooth(Mn,1x1)



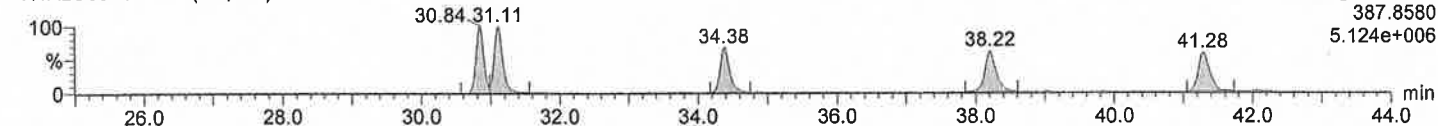
¹³C-HxCDF

N1ALU55 Smooth(Mn,1x1)



¹³C-HxCDF

N1ALU55 Smooth(Mn,1x1)



Quantify Sample Report MassLynx 4.0 SCN503

Dataset: ¥¥Kh213¥results¥U2AOX7.qld

Last Altered: 2013年7月25日 11:56:56 東京 (標準時)

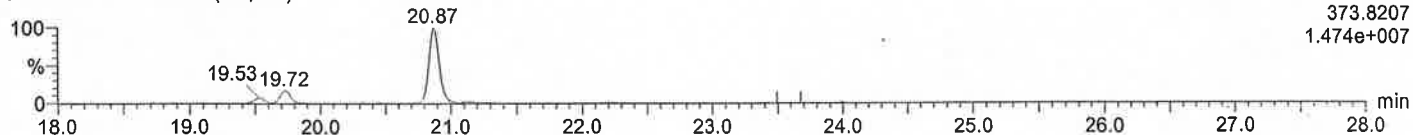
Printed: 2013年7月25日 13:21:19 東京 (標準時)

Date: 24-JUL-2013, Time: 08:42:28, Description: N774-14

1,2,3,7,8,9-HxCDF(DB)

U2AOX7S017 Smooth(Mn,1x1)

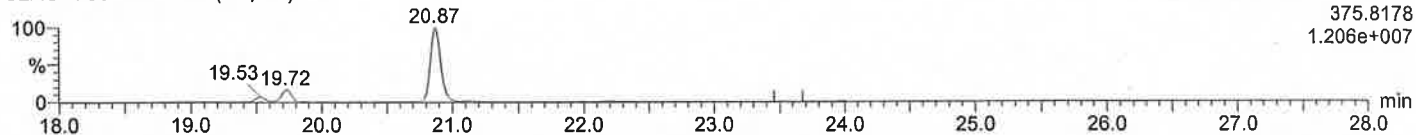
F1:SIR of 18 channels,EI+
373.8207
1.474e+007



1,2,3,7,8,9-HxCDF(DB)

U2AOX7S017 Smooth(Mn,1x1)

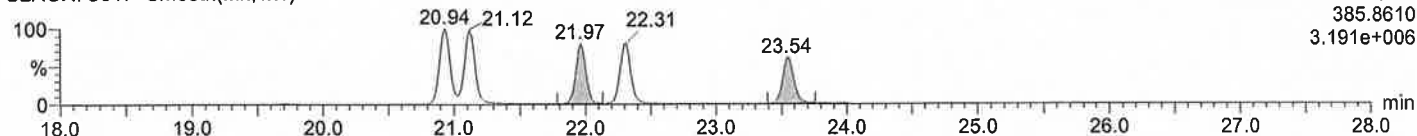
F1:SIR of 18 channels,EI+
375.8178
1.206e+007



13C-HxCDF(DB)

U2AOX7S017 Smooth(Mn,1x1)

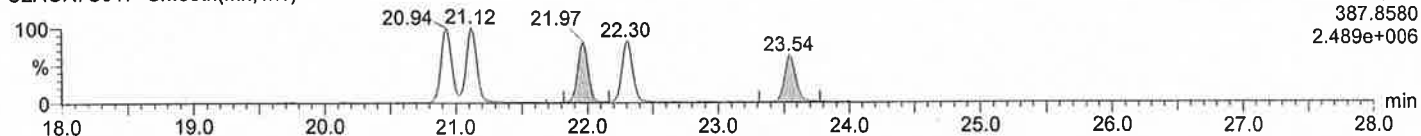
F1:SIR of 18 channels,EI+
385.8610
3.191e+006



13C-HxCDF(DB)

U2AOX7S017 Smooth(Mn,1x1)

F1:SIR of 18 channels,EI+
387.8580
2.489e+006



Quantify Sample Report MassLynx 4.0 SCN503

Dataset: ¥¥Kh213¥results¥U2AOX7.qld

Last Altered: 2013年7月25日 11:56:56 東京 (標準時)

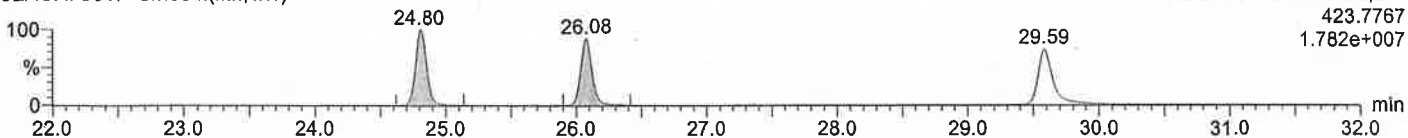
Printed: 2013年7月25日 13:21:19 東京 (標準時)

Date: 24-JUL-2013, Time: 08:42:28, Description: N774-14

HpCDDs

U2AOX7S017 Smooth(Mn,1x1)

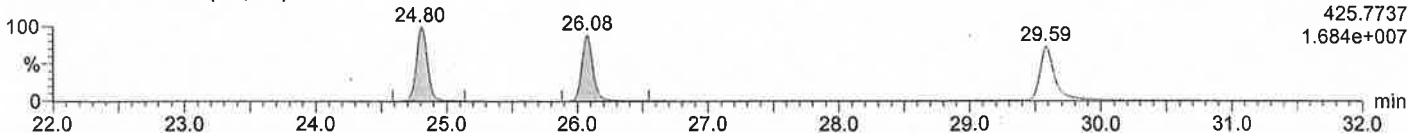
F2:SIR of 18 channels,EI+
423.7767
1.782e+007



HpCDDs

U2AOX7S017 Smooth(Mn,1x1)

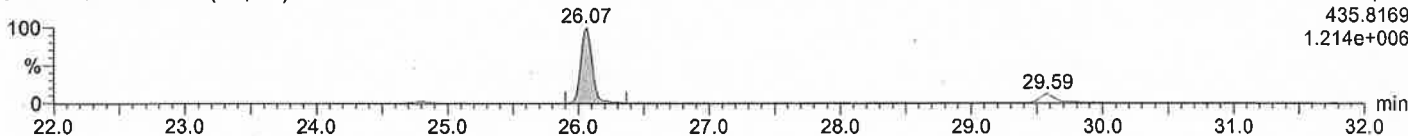
F2:SIR of 18 channels,EI+
425.7737
1.684e+007



13C-HpCDD

U2AOX7S017 Smooth(Mn,1x1)

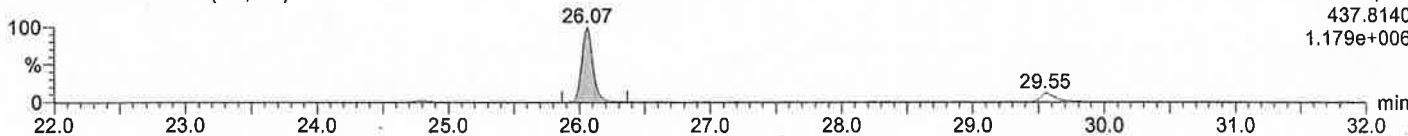
F2:SIR of 18 channels,EI+
435.8169
1.214e+006



13C-HpCDD

U2AOX7S017 Smooth(Mn,1x1)

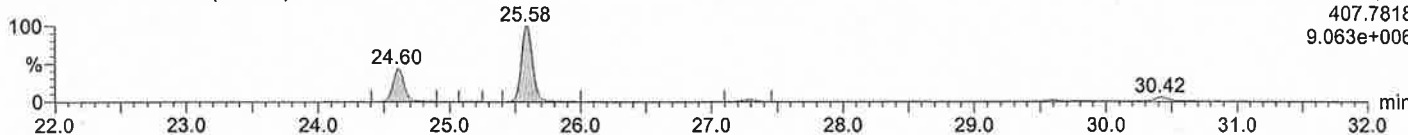
F2:SIR of 18 channels,EI+
437.8140
1.179e+006



HpCDFs

U2AOX7S017 Smooth(Mn,1x1)

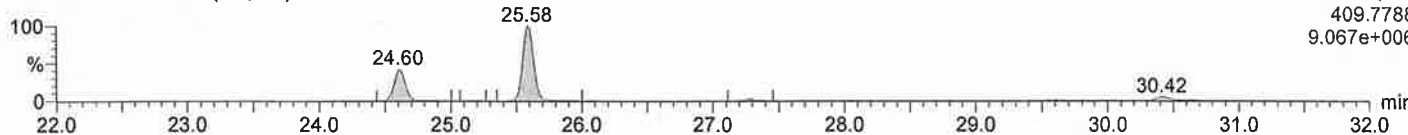
F2:SIR of 18 channels,EI+
407.7818
9.063e+006



HpCDFs

U2AOX7S017 Smooth(Mn,1x1)

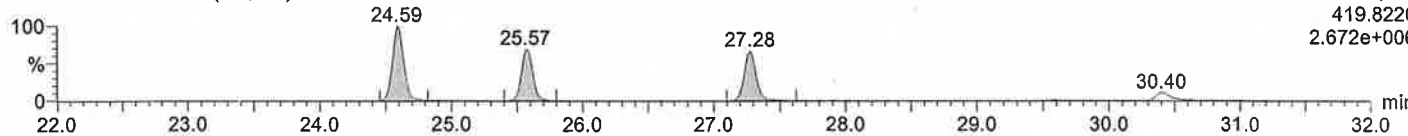
F2:SIR of 18 channels,EI+
409.7788
9.067e+006



13C-HpCDF

U2AOX7S017 Smooth(Mn,1x1)

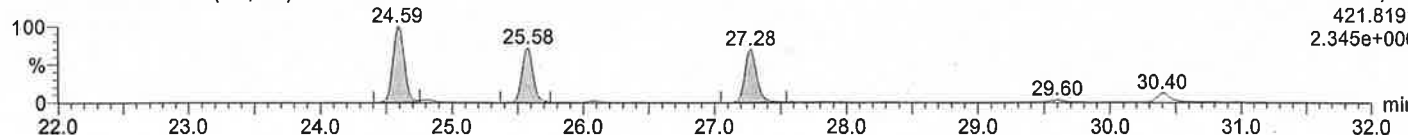
F2:SIR of 18 channels,EI+
419.8220
2.672e+006



13C-HpCDF

U2AOX7S017 Smooth(Mn,1x1)

F2:SIR of 18 channels,EI+
421.8191
2.345e+006



Quantify Sample Report MassLynx 4.0 SCN503

Dataset: ¥¥Kh213¥results¥U2AOX7.qld

Last Altered: 2013年7月25日 11:56:56 東京 (標準時)

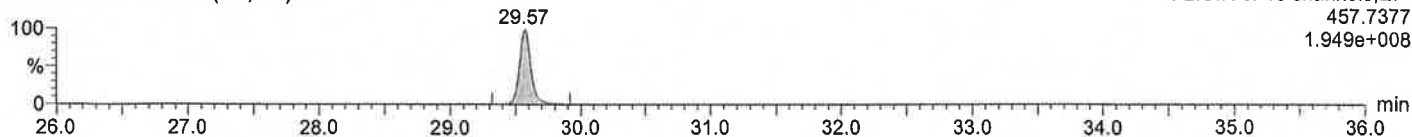
Printed: 2013年7月25日 13:21:19 東京 (標準時)

Date: 24-JUL-2013, Time: 08:42:28, Description: N774-14

OCDD

U2AOX7S017 Smooth(Mn,1x1)

F2:SIR of 18 channels,EI+

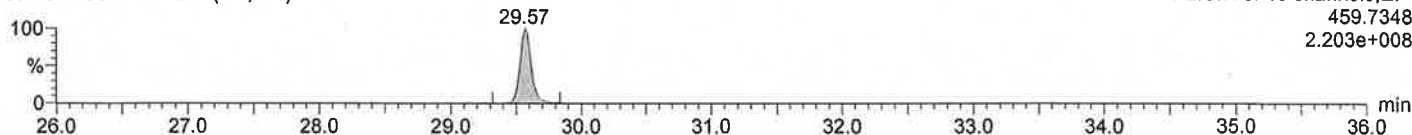


457.7377
1.949e+008

OCDD

U2AOX7S017 Smooth(Mn,1x1)

F2:SIR of 18 channels,EI+

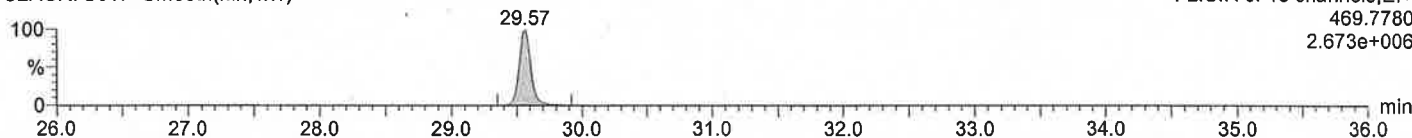


459.7348
2.203e+008

13C-OCDD

U2AOX7S017 Smooth(Mn,1x1)

F2:SIR of 18 channels,EI+

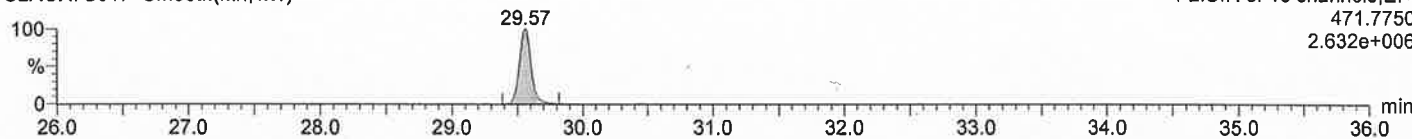


469.7780
2.673e+006

13C-OCDD

U2AOX7S017 Smooth(Mn,1x1)

F2:SIR of 18 channels,EI+

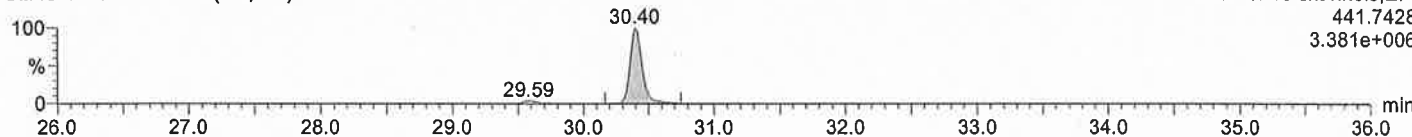


471.7750
2.632e+006

OCDF

U2AOX7S017 Smooth(Mn,1x1)

F2:SIR of 18 channels,EI+

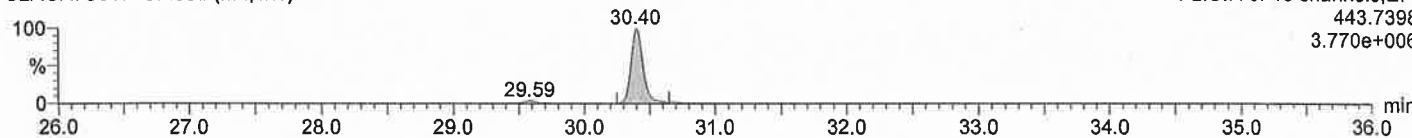


441.7428
3.381e+006

OCDF

U2AOX7S017 Smooth(Mn,1x1)

F2:SIR of 18 channels,EI+

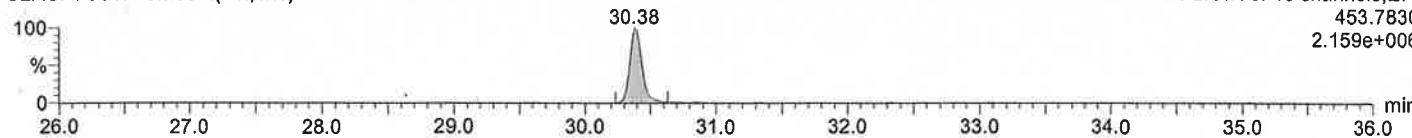


443.7398
3.770e+006

13C-OCDF

U2AOX7S017 Smooth(Mn,1x1)

F2:SIR of 18 channels,EI+

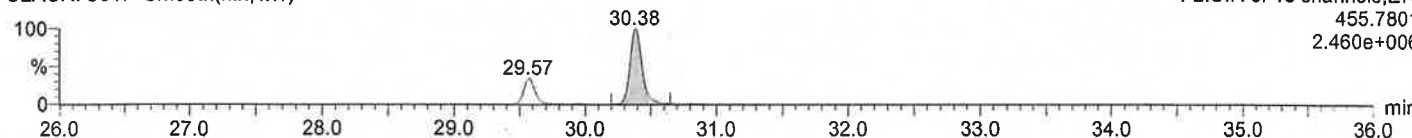


453.7830
2.159e+006

13C-OCDF

U2AOX7S017 Smooth(Mn,1x1)

F2:SIR of 18 channels,EI+



455.7801
2.460e+006

Quantify Sample Report MassLynx 4.0 SCN503

Dataset: ¥¥Kh213¥results¥N4JH 20-22DL.qld

Last Altered: 2013年7月25日 13:56:29 東京 (標準時)

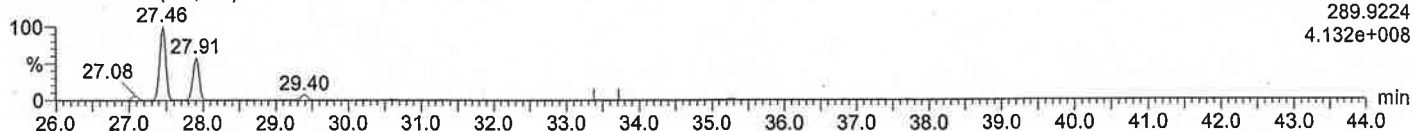
Printed: 2013年7月25日 13:57:33 東京 (標準時)

Date: 25-Jul-2013, Time: 07:46:29, Description: N774-14

TeCB

N4JH21 Smooth(Mn,1x1)

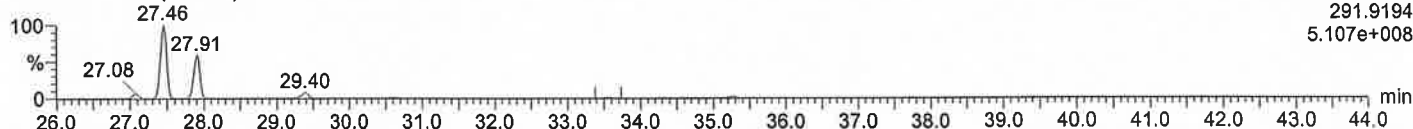
F1:Voltage SIR,EI+
289.9224
4.132e+008



TeCB

N4JH21 Smooth(Mn,1x1)

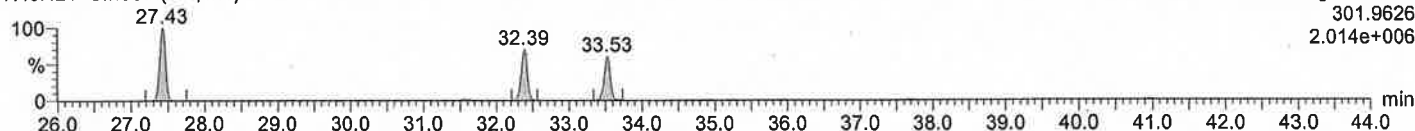
F1:Voltage SIR,EI+
291.9194
5.107e+008



¹³C-TeCB

N4JH21 Smooth(Mn,1x1)

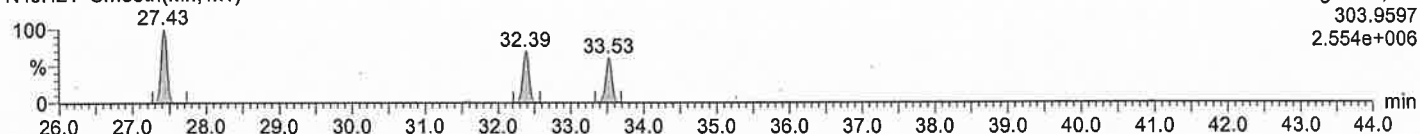
F1:Voltage SIR,EI+
301.9626
2.014e+006



¹³C-TeCB

N4JH21 Smooth(Mn,1x1)

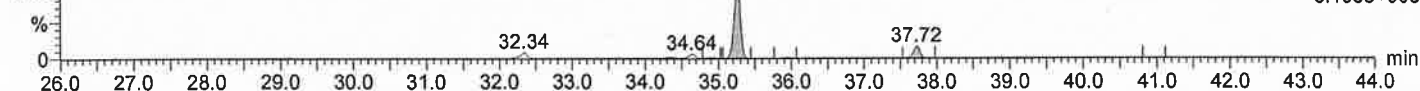
F1:Voltage SIR,EI+
303.9597
2.554e+006



PeCB

N4JH21 Smooth(Mn,1x1)

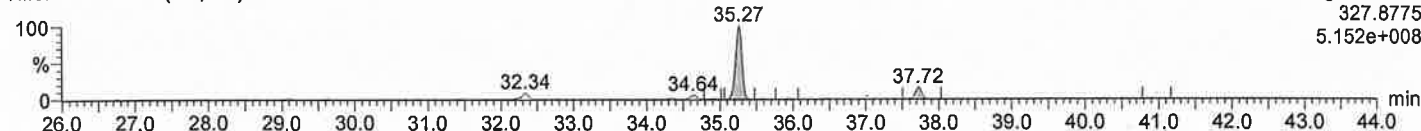
F1:Voltage SIR,EI+
325.8804
8.198e+008



PeCB

N4JH21 Smooth(Mn,1x1)

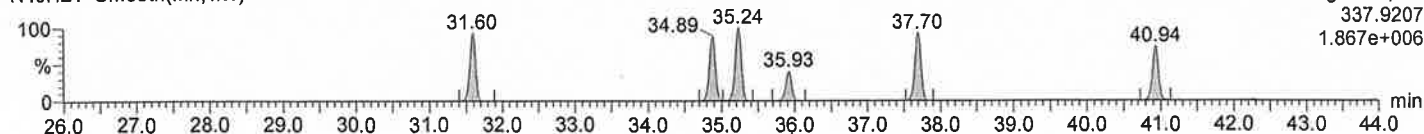
F1:Voltage SIR,EI+
327.8775
5.152e+008



¹³C-PeCB

N4JH21 Smooth(Mn,1x1)

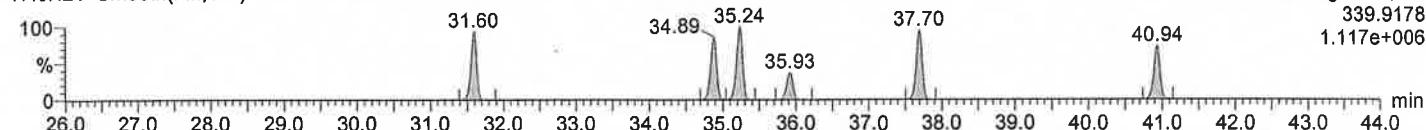
F1:Voltage SIR,EI+
337.9207
1.867e+006



¹³C-PeCB

N4JH21 Smooth(Mn,1x1)

F1:Voltage SIR,EI+
339.9178
1.117e+006



Quantify Sample Report MassLynx 4.0 SCN503

Dataset: ¥¥Kh213¥results¥N4JH 20-22DL.qld

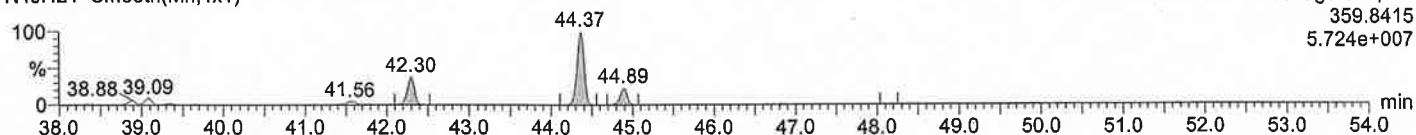
Last Altered: 2013年7月25日 13:56:29 東京 (標準時)
Printed: 2013年7月25日 13:57:33 東京 (標準時)

Date: 25-Jul-2013, Time: 07:46:29, Description: N774-14

HxCB

N4JH21 Smooth(Mn,1x1)

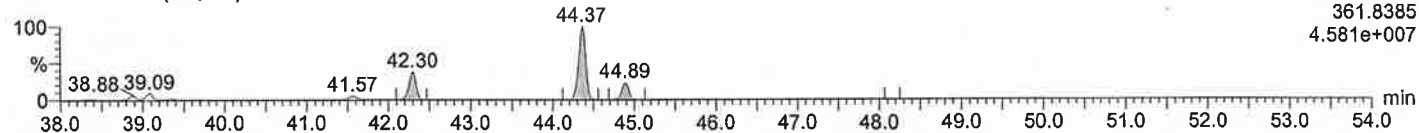
F1:Voltage SIR,EI+
359.8415
5.724e+007



HxCB

N4JH21 Smooth(Mn,1x1)

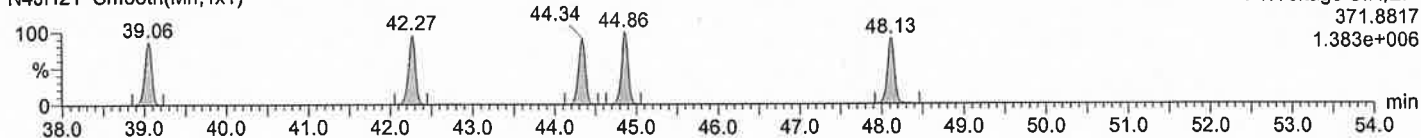
F1:Voltage SIR,EI+
361.8385
4.581e+007



¹³C-HxCB

N4JH21 Smooth(Mn,1x1)

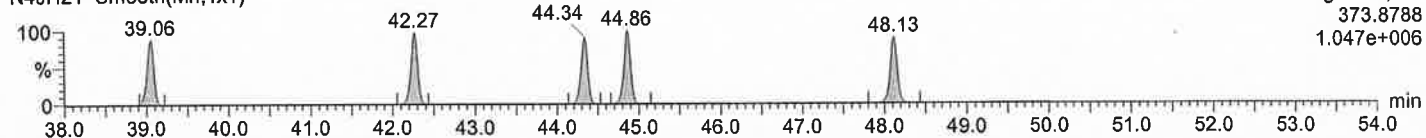
F1:Voltage SIR,EI+
371.8817
1.383e+006



¹³C-HxCB

N4JH21 Smooth(Mn,1x1)

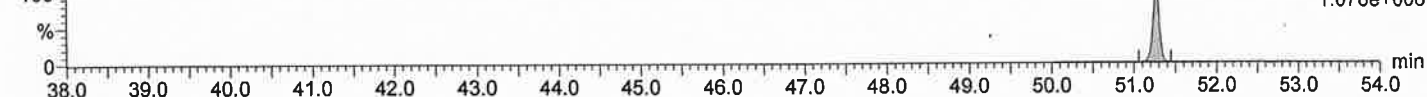
F1:Voltage SIR,EI+
373.8788
1.047e+006



HpCB

N4JH21 Smooth(Mn,1x1)

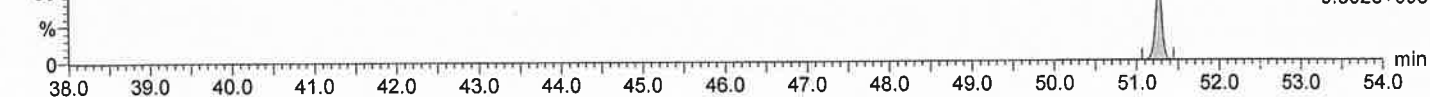
F2:Voltage SIR,EI+
393.8025
1.078e+006



HpCB

N4JH21 Smooth(Mn,1x1)

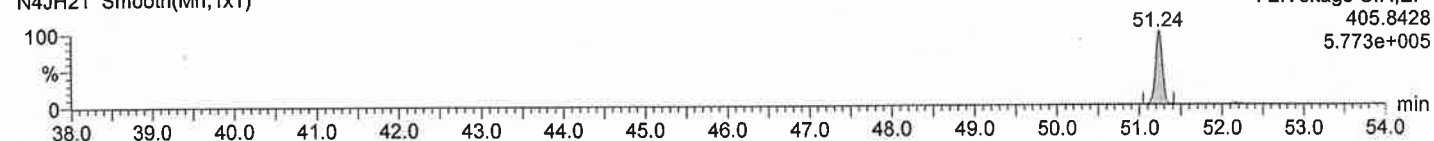
F2:Voltage SIR,EI+
395.7995
9.802e+005



¹³C-HpCB

N4JH21 Smooth(Mn,1x1)

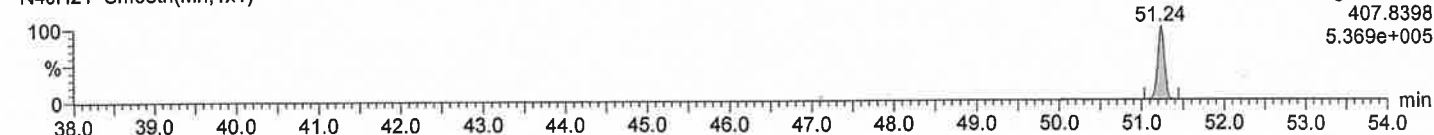
F2:Voltage SIR,EI+
405.8428
5.773e+005



¹³C-HpCB

N4JH21 Smooth(Mn,1x1)

F2:Voltage SIR,EI+
407.8398
5.369e+005



GC/MS-SIMクロマトグラム

採取日：2013年7月2日

試料名：ドラム缶内容物 No.15

Quantify Sample Report MassLynx 4.0 SCN503

Dataset: ¥¥Kh213¥results¥N1ALU 43-56.qld

Last Altered: 2013年7月25日 13:55:18 東京 (標準時)

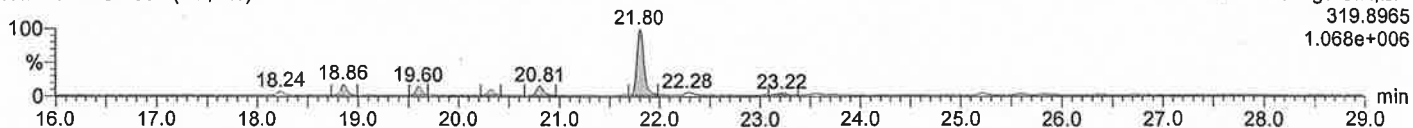
Printed: 2013年7月25日 13:56:00 東京 (標準時)

Date: 25-Jul-2013, Time: 03:15:11, Description: N774-15

TeCDD

N1ALU56 Smooth(Mn,1x1)

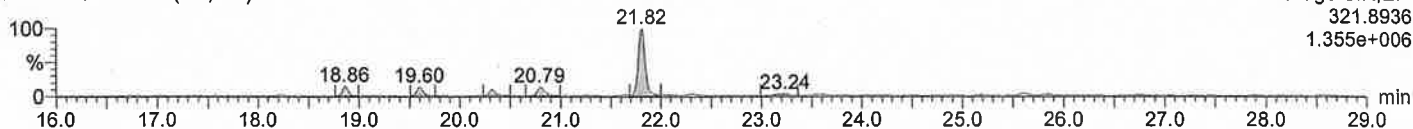
Voltage SIR,EI+
319.8965
1.068e+006



TeCDD

N1ALU56 Smooth(Mn,1x1)

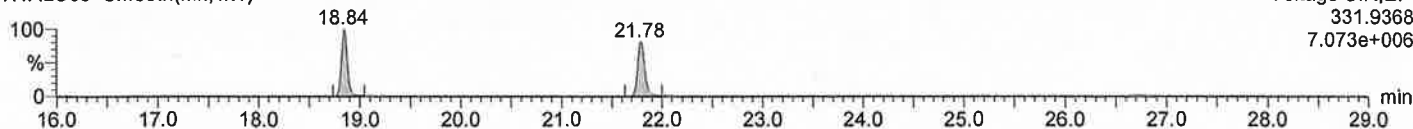
Voltage SIR,EI+
321.8936
1.355e+006



¹³C-TeCDD

N1ALU56 Smooth(Mn,1x1)

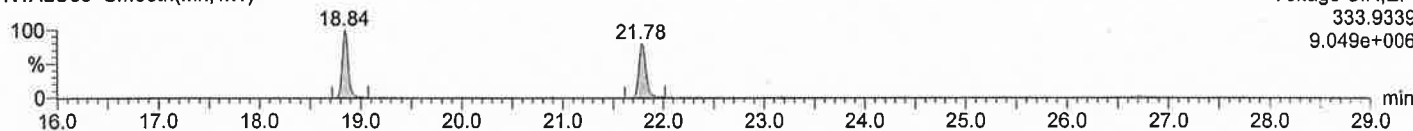
Voltage SIR,EI+
331.9368
7.073e+006



¹³C-TeCDD

N1ALU56 Smooth(Mn,1x1)

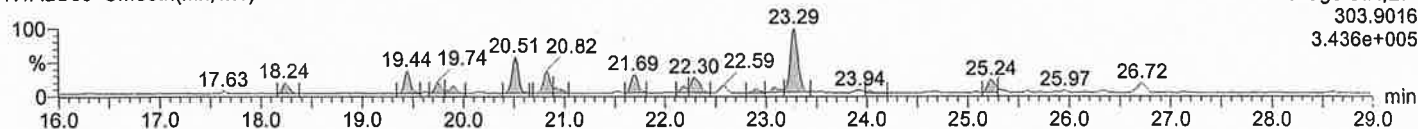
Voltage SIR,EI+
333.9339
9.049e+006



TeCDF

N1ALU56 Smooth(Mn,1x1)

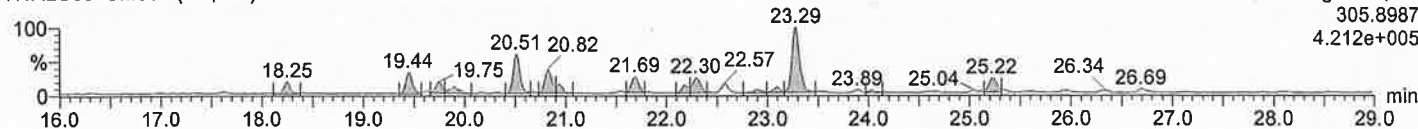
Voltage SIR,EI+
303.9016
3.436e+005



TeCDF

N1ALU56 Smooth(Mn,1x1)

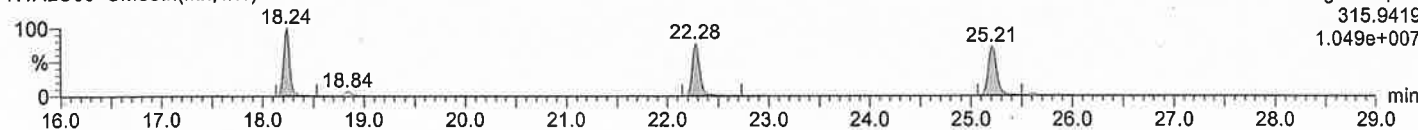
Voltage SIR,EI+
305.8987
4.212e+005



¹³C-TeCDF

N1ALU56 Smooth(Mn,1x1)

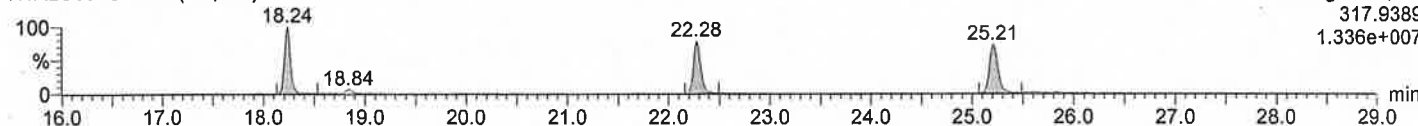
Voltage SIR,EI+
315.9419
1.049e+007



¹³C-TeCDF

N1ALU56 Smooth(Mn,1x1)

Voltage SIR,EI+
317.9389
1.336e+007



Quantify Sample Report MassLynx 4.0 SCN503

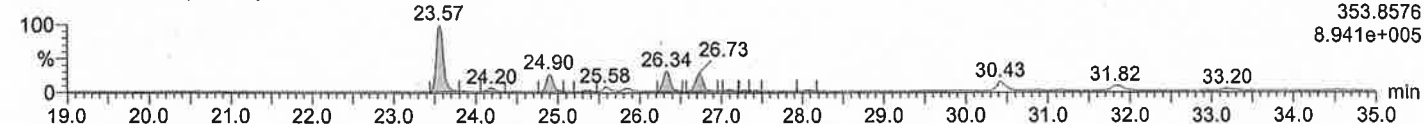
Dataset: ¥¥Kh213¥results¥N1ALU 43-56.qld

Last Altered: 2013年7月25日 13:55:18 東京 (標準時)
Printed: 2013年7月25日 13:56:00 東京 (標準時)

Date: 25-Jul-2013, Time: 03:15:11, Description: N774-15

PeCDDs

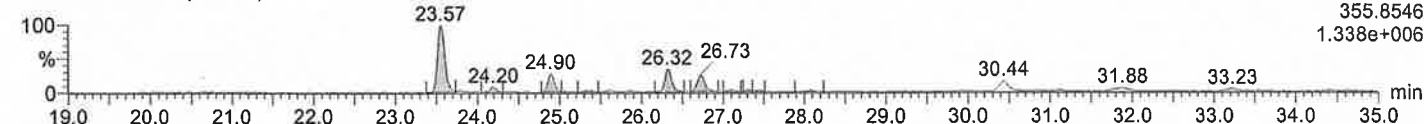
N1ALU56 Smooth(Mn,1x1)



Voltage SIR, EI+
353.8576
8.941e+005

PeCDDs

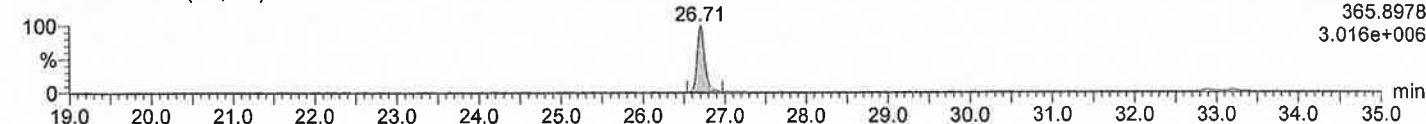
N1ALU56 Smooth(Mn,1x1)



Voltage SIR, EI+
355.8546
1.338e+006

¹³C-PeCDD

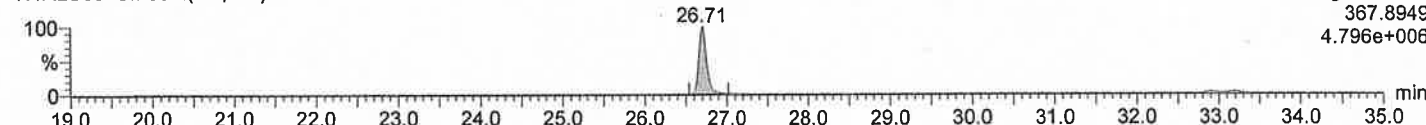
N1ALU56 Smooth(Mn,1x1)



Voltage SIR, EI+
365.8978
3.016e+006

¹³C-PeCDD

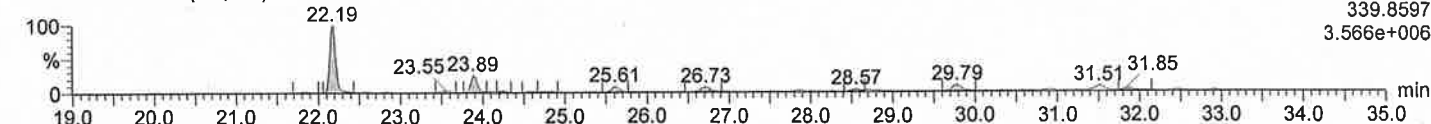
N1ALU56 Smooth(Mn,1x1)



Voltage SIR, EI+
367.8949
4.796e+006

PeCDFs

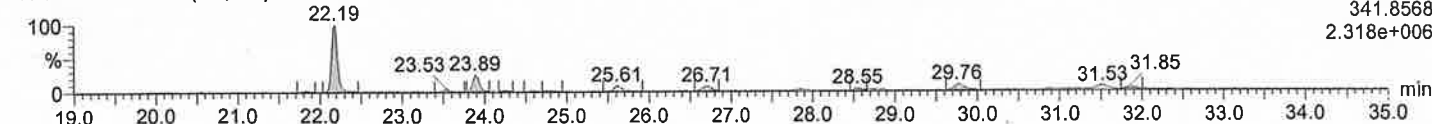
N1ALU56 Smooth(Mn,1x1)



Voltage SIR, EI+
339.8597
3.566e+006

PeCDFs

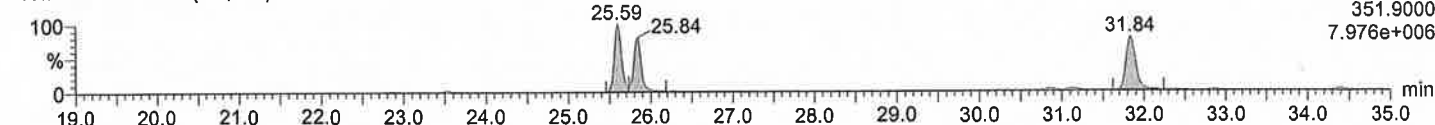
N1ALU56 Smooth(Mn,1x1)



Voltage SIR, EI+
341.8568
2.318e+006

¹³C-PeCDF

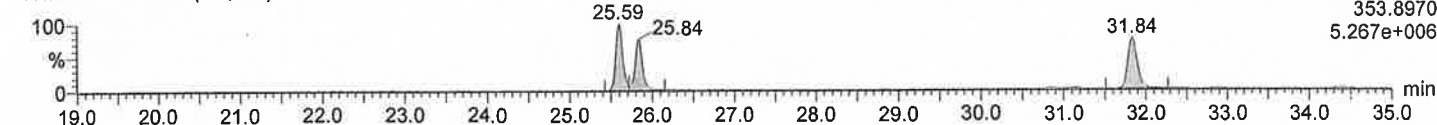
N1ALU56 Smooth(Mn,1x1)



Voltage SIR, EI+
351.9000
7.976e+006

¹³C-PeCDF

N1ALU56 Smooth(Mn,1x1)



Voltage SIR, EI+
353.8970
5.267e+006

Quantify Sample Report MassLynx 4.0 SCN503

Dataset: ¥¥Kh213¥results¥N1ALU 43-56.qld

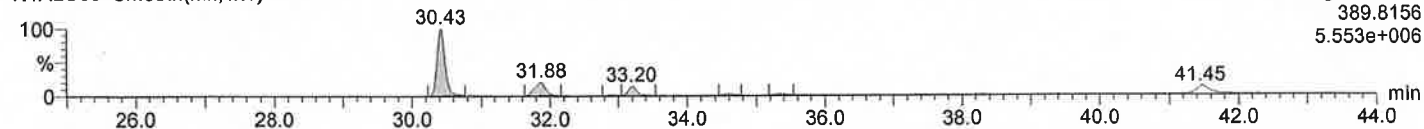
Last Altered: 2013年7月25日 13:55:18 東京 (標準時)

Printed: 2013年7月25日 13:56:00 東京 (標準時)

Date: 25-Jul-2013, Time: 03:15:11, Description: N774-15

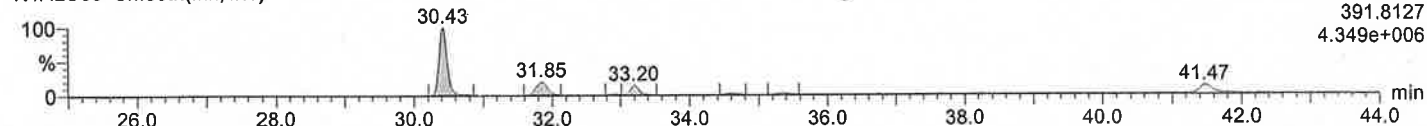
HxCDDs

N1ALU56 Smooth(Mn,1x1)



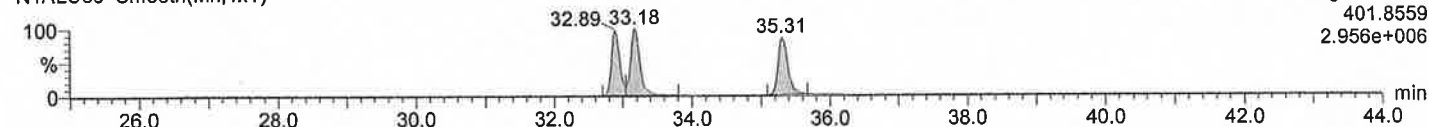
HxCDDs

N1ALU56 Smooth(Mn,1x1)



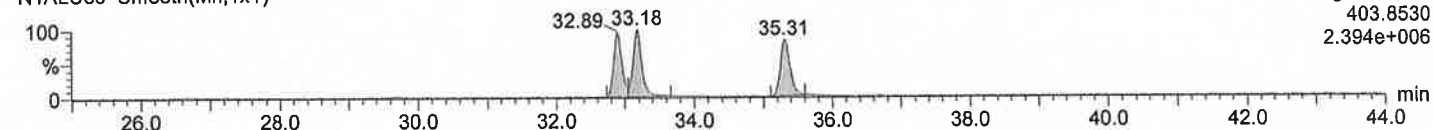
¹³C-HxCDD

N1ALU56 Smooth(Mn,1x1)



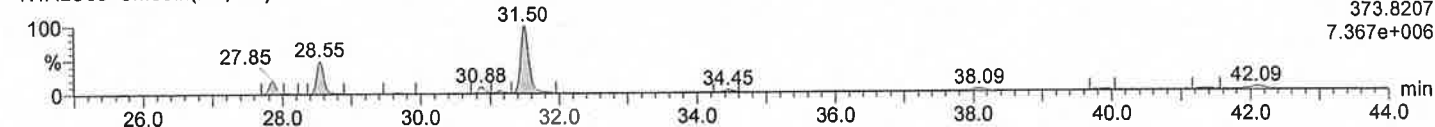
¹³C-HxCDD

N1ALU56 Smooth(Mn,1x1)



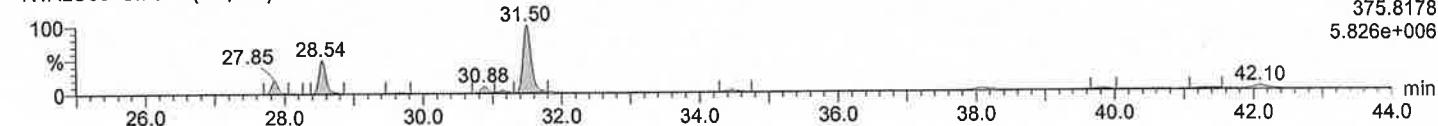
HxCDFs

N1ALU56 Smooth(Mn,1x1)



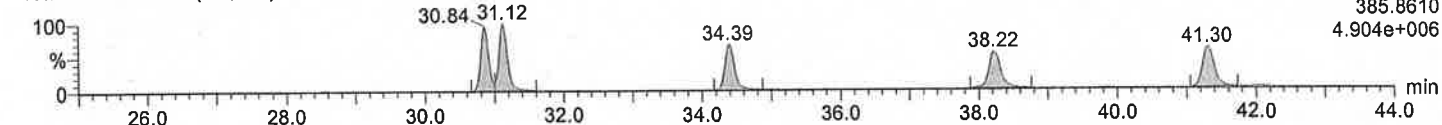
HxCDFs

N1ALU56 Smooth(Mn,1x1)



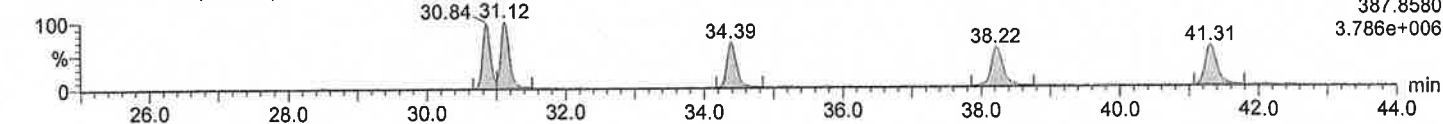
¹³C-HxCDF

N1ALU56 Smooth(Mn,1x1)



¹³C-HxCDF

N1ALU56 Smooth(Mn,1x1)



Quantify Sample Report MassLynx 4.0 SCN503

Dataset: ¥¥Kh213¥results¥U2AOX7.qld

Last Altered: 2013年7月25日 11:56:56 東京 (標準時)

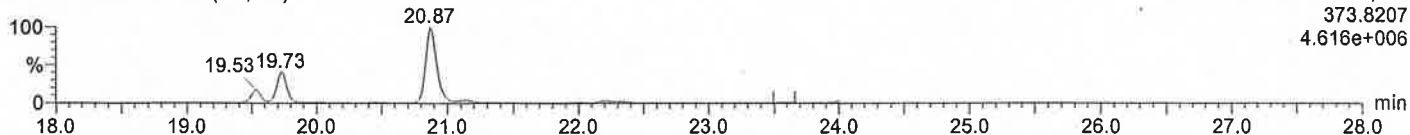
Printed: 2013年7月25日 13:21:19 東京 (標準時)

Date: 24-JUL-2013, Time: 09:28:23, Description: N774-15

1,2,3,7,8,9-HxCDF(DB)

U2AOX7S018 Smooth(Mn,1x1)

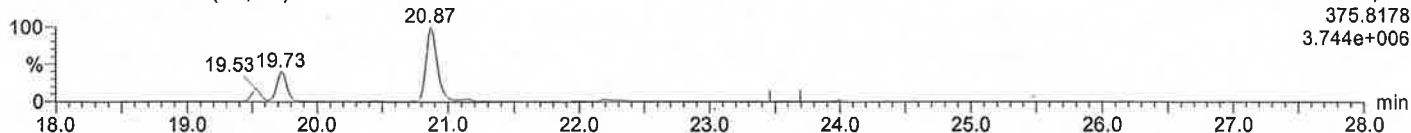
F1:SIR of 18 channels,EI+
373.8207
4.616e+006



1,2,3,7,8,9-HxCDF(DB)

U2AOX7S018 Smooth(Mn,1x1)

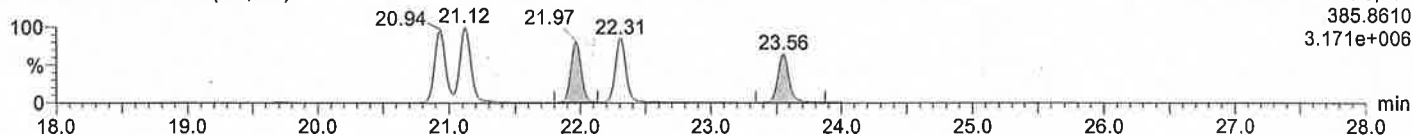
F1:SIR of 18 channels,EI+
375.8178
3.744e+006



13C-HxCDF(DB)

U2AOX7S018 Smooth(Mn,1x1)

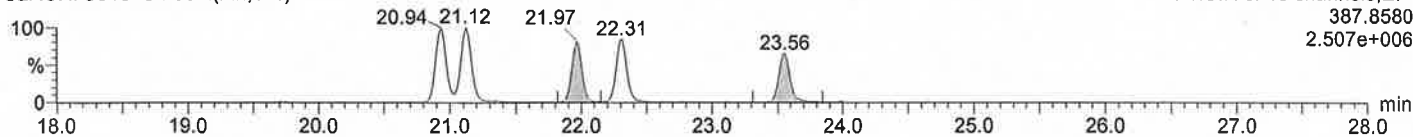
F1:SIR of 18 channels,EI+
385.8610
3.171e+006



13C-HxCDF(DB)

U2AOX7S018 Smooth(Mn,1x1)

F1:SIR of 18 channels,EI+
387.8580
2.507e+006



Quantify Sample Report MassLynx 4.0 SCN503

Dataset: ¥¥Kh213¥results¥U2AOX7.qld

Last Altered: 2013年7月25日 11:56:56 東京 (標準時)

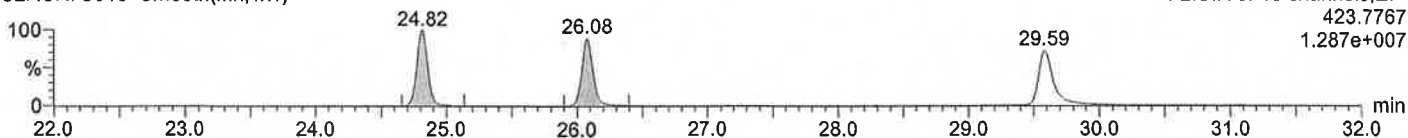
Printed: 2013年7月25日 13:21:19 東京 (標準時)

Date: 24-JUL-2013, Time: 09:28:23, Description: N774-15

HpCDDs

U2AOX7S018 Smooth(Mn,1x1)

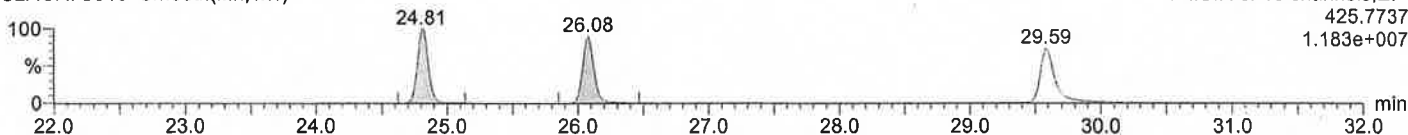
F2:SIR of 18 channels, EI+
423.7767
1.287e+007



HpCDDs

U2AOX7S018 Smooth(Mn,1x1)

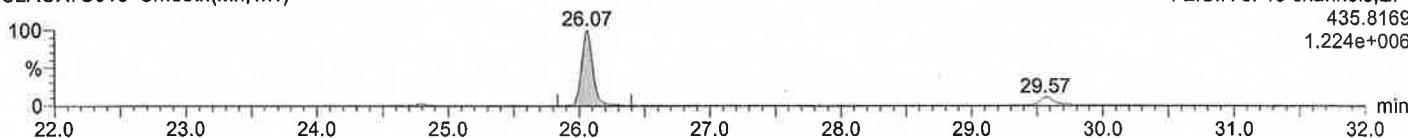
F2:SIR of 18 channels, EI+
425.7737
1.183e+007



13C-HpCDD

U2AOX7S018 Smooth(Mn,1x1)

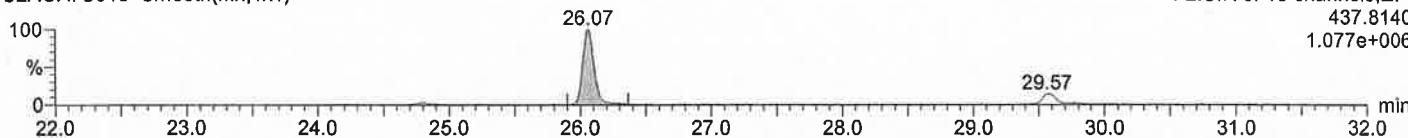
F2:SIR of 18 channels, EI+
435.8169
1.224e+006



13C-HpCDD

U2AOX7S018 Smooth(Mn,1x1)

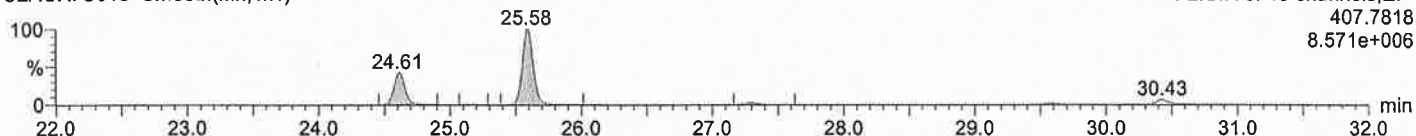
F2:SIR of 18 channels, EI+
437.8140
1.077e+006



HpCDFs

U2AOX7S018 Smooth(Mn,1x1)

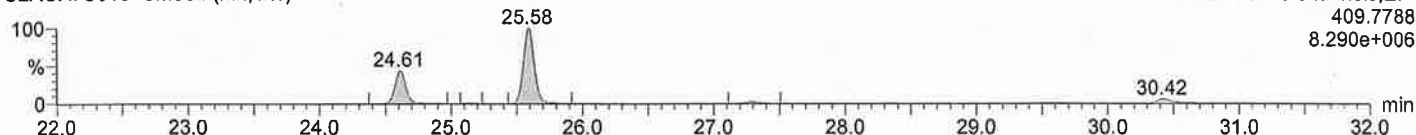
F2:SIR of 18 channels, EI+
407.7818
8.571e+006



HpCDFs

U2AOX7S018 Smooth(Mn,1x1)

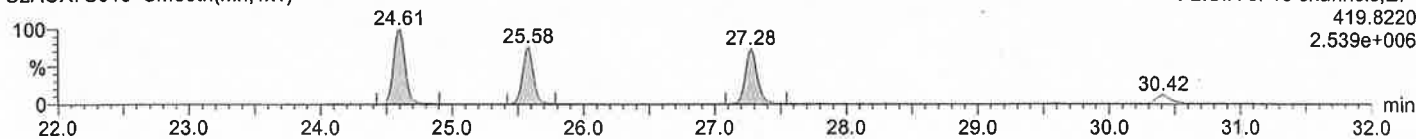
F2:SIR of 18 channels, EI+
409.7788
8.290e+006



13C-HpCDF

U2AOX7S018 Smooth(Mn,1x1)

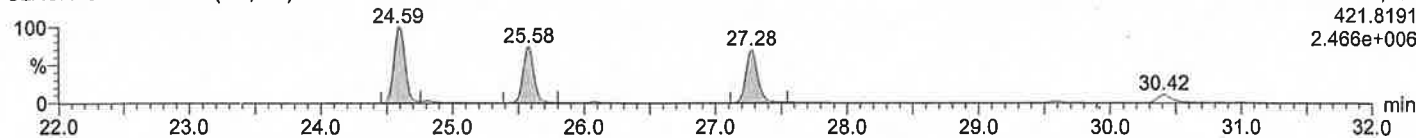
F2:SIR of 18 channels, EI+
419.8220
2.539e+006



13C-HpCDF

U2AOX7S018 Smooth(Mn,1x1)

F2:SIR of 18 channels, EI+
421.8191
2.466e+006



Quantify Sample Report MassLynx 4.0 SCN503

Dataset: ¥¥Kh213¥results¥U2AOX7.qld

Last Altered: 2013年7月25日 11:56:56 東京 (標準時)

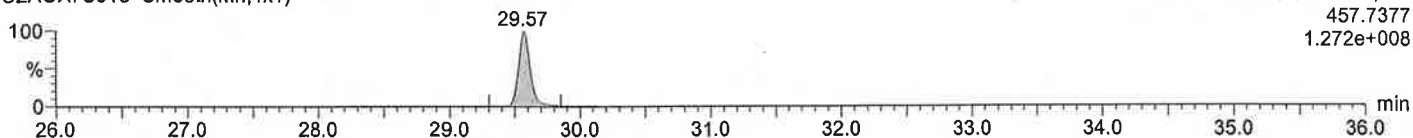
Printed: 2013年7月25日 13:21:19 東京 (標準時)

Date: 24-JUL-2013, Time: 09:28:23, Description: N774-15

OCDD

U2AOX7S018 Smooth(Mn,1x1)

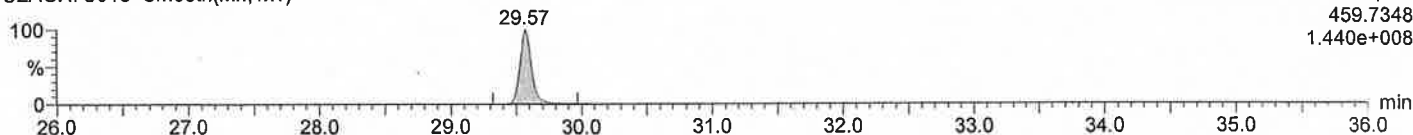
F2:SIR of 18 channels,EI+
457.7377
1.272e+008



OCDD

U2AOX7S018 Smooth(Mn,1x1)

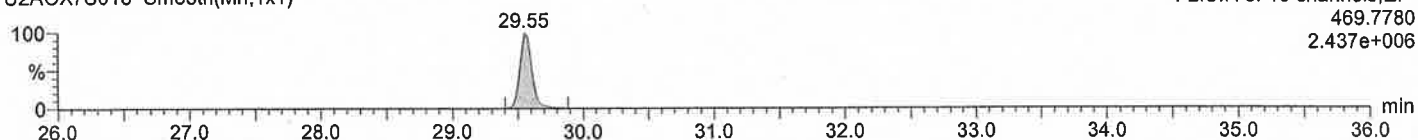
F2:SIR of 18 channels,EI+
459.7348
1.440e+008



13C-OCDD

U2AOX7S018 Smooth(Mn,1x1)

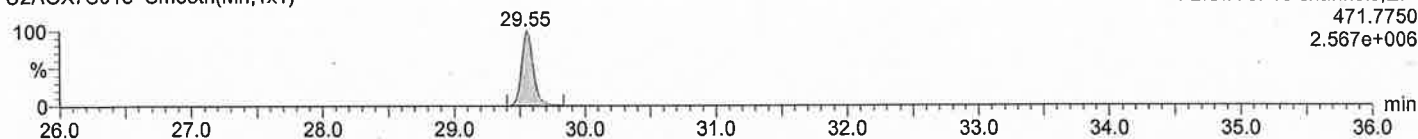
F2:SIR of 18 channels,EI+
469.7780
2.437e+006



13C-OCDD

U2AOX7S018 Smooth(Mn,1x1)

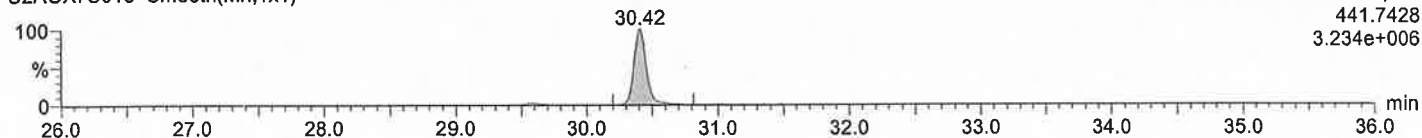
F2:SIR of 18 channels,EI+
471.7750
2.567e+006



OCDF

U2AOX7S018 Smooth(Mn,1x1)

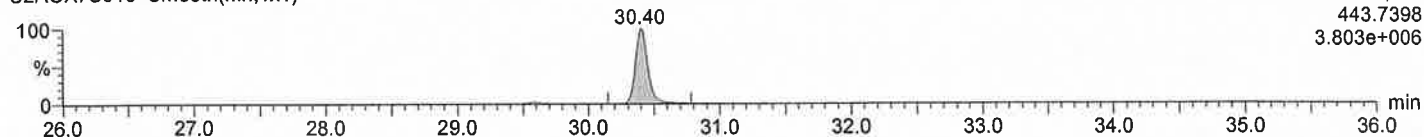
F2:SIR of 18 channels,EI+
441.7428
3.234e+006



OCDF

U2AOX7S018 Smooth(Mn,1x1)

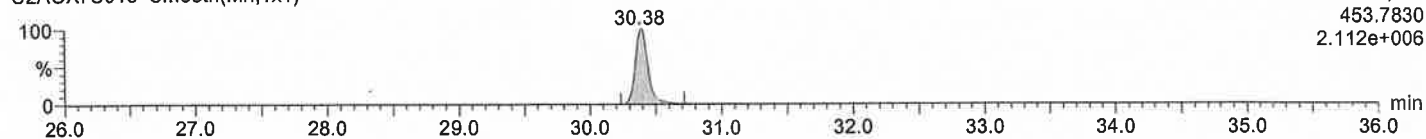
F2:SIR of 18 channels,EI+
443.7398
3.803e+006



13C-OCDF

U2AOX7S018 Smooth(Mn,1x1)

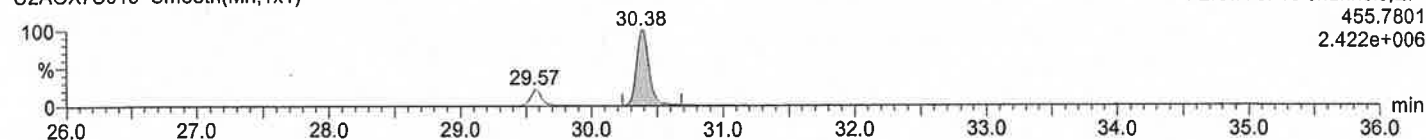
F2:SIR of 18 channels,EI+
453.7830
2.112e+006



13C-OCDF

U2AOX7S018 Smooth(Mn,1x1)

F2:SIR of 18 channels,EI+
455.7801
2.422e+006



Quantify Sample Report MassLynx 4.0 SCN503

Dataset: ¥¥Kh213¥results¥N4JH 20-22DL.qld

Last Altered: 2013年7月25日 13:56:29 東京 (標準時)

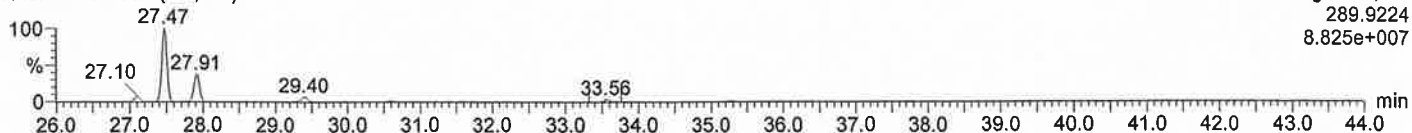
Printed: 2013年7月25日 13:57:33 東京 (標準時)

Date: 25-Jul-2013, Time: 08:50:05, Description: N774-15

TeCB

N4JH22 Smooth(Mn,1x1)

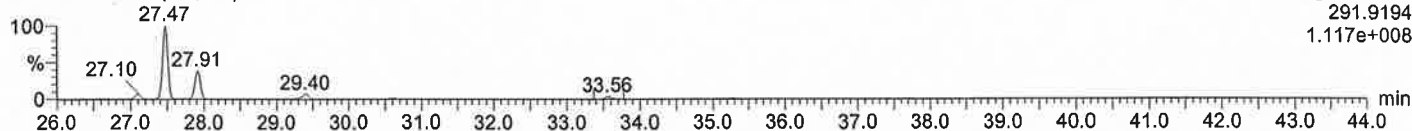
F1:Voltage SIR,EI+
289.9224
8.825e+007



TeCB

N4JH22 Smooth(Mn,1x1)

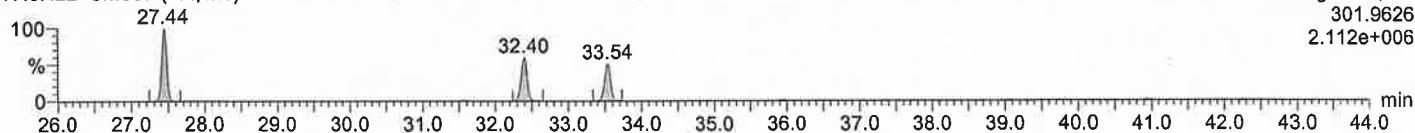
F1:Voltage SIR,EI+
291.9194
1.117e+008



¹³C-TeCB

N4JH22 Smooth(Mn,1x1)

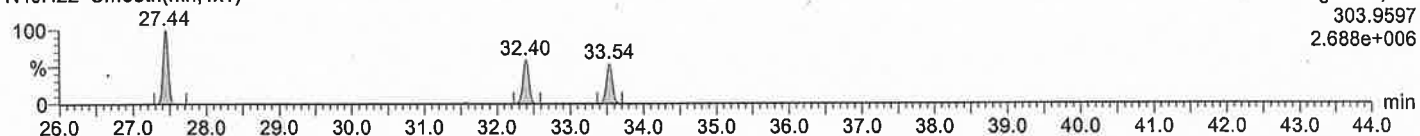
F1:Voltage SIR,EI+
301.9626
2.112e+006



¹³C-TeCB

N4JH22 Smooth(Mn,1x1)

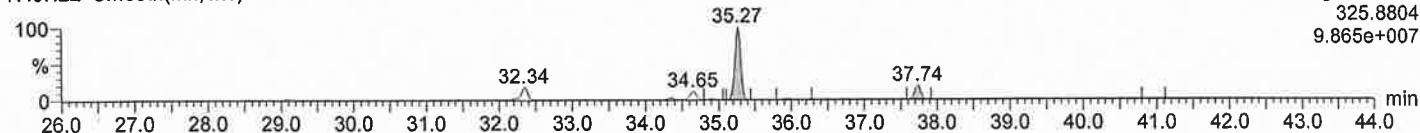
F1:Voltage SIR,EI+
303.9597
2.688e+006



PeCB

N4JH22 Smooth(Mn,1x1)

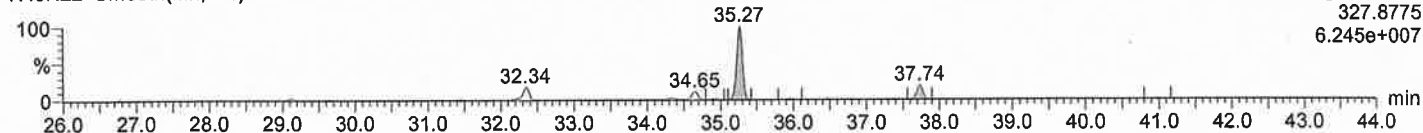
F1:Voltage SIR,EI+
325.8804
9.865e+007



PeCB

N4JH22 Smooth(Mn,1x1)

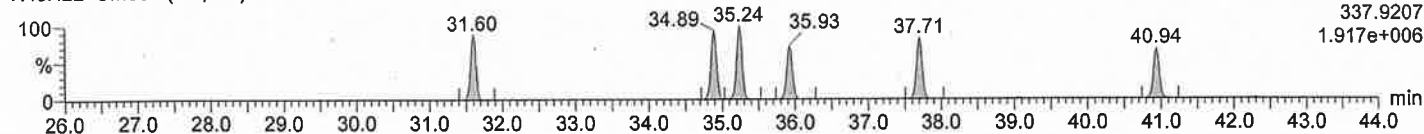
F1:Voltage SIR,EI+
327.8775
6.245e+007



¹³C-PeCB

N4JH22 Smooth(Mn,1x1)

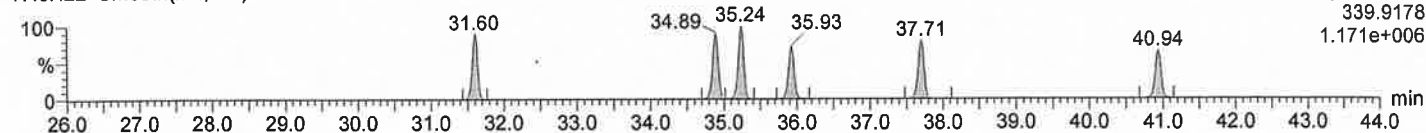
F1:Voltage SIR,EI+
337.9207
1.917e+006



¹³C-PeCB

N4JH22 Smooth(Mn,1x1)

F1:Voltage SIR,EI+
339.9178
1.171e+006



Quantify Sample Report MassLynx 4.0 SCN503

Dataset: ¥¥Kh213¥results¥N4JH 20-22DL.qld

Last Altered: 2013年7月25日 13:56:29 東京 (標準時)

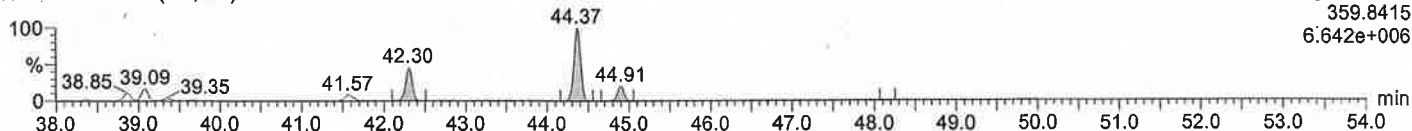
Printed: 2013年7月25日 13:57:33 東京 (標準時)

Date: 25-Jul-2013, Time: 08:50:05, Description: N774-15

HxCB

N4JH22 Smooth(Mn,1x1)

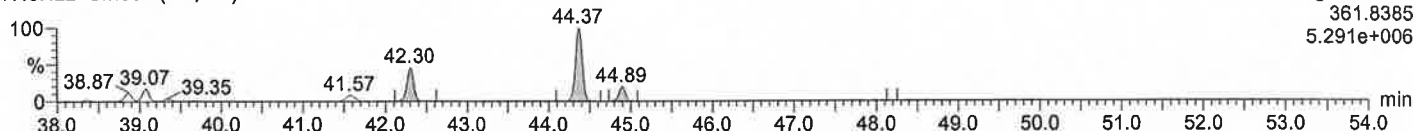
F1:Voltage SIR,EI+
359.8415
6.642e+006



HxCB

N4JH22 Smooth(Mn,1x1)

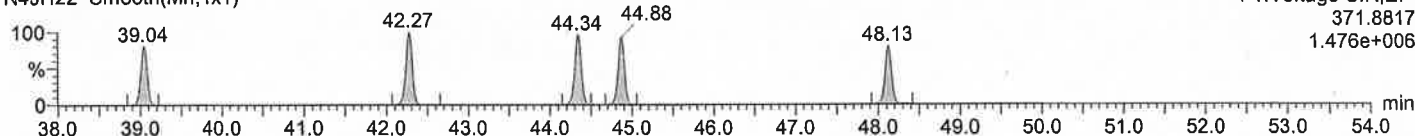
F1:Voltage SIR,EI+
361.8385
5.291e+006



¹³C-HxCB

N4JH22 Smooth(Mn,1x1)

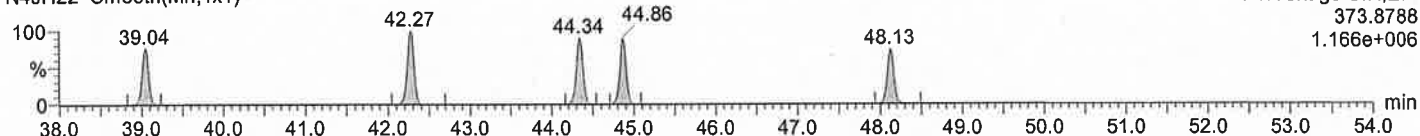
F1:Voltage SIR,EI+
371.8817
1.476e+006



¹³C-HxCB

N4JH22 Smooth(Mn,1x1)

F1:Voltage SIR,EI+
373.8788
1.166e+006



HpCB

N4JH22 Smooth(Mn,1x1)

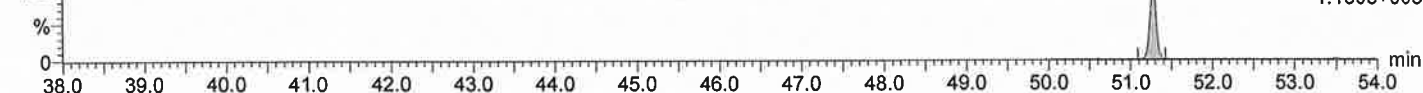
F2:Voltage SIR,EI+
393.8025
1.247e+005



HpCB

N4JH22 Smooth(Mn,1x1)

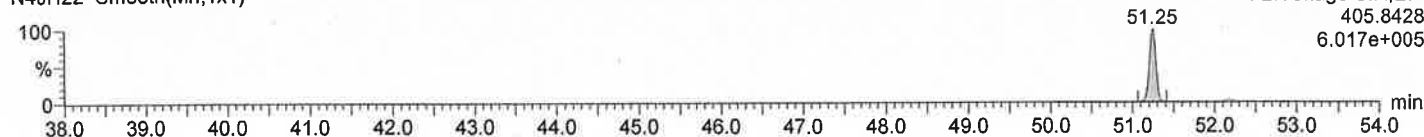
F2:Voltage SIR,EI+
395.7995
1.180e+005



¹³C-HpCB

N4JH22 Smooth(Mn,1x1)

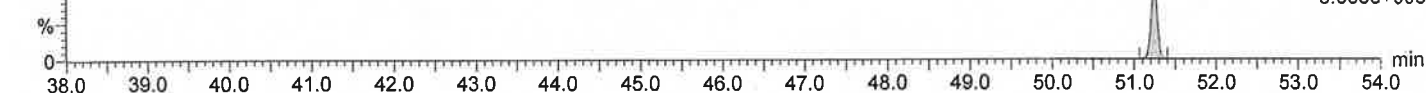
F2:Voltage SIR,EI+
405.8428
6.017e+005



¹³C-HpCB

N4JH22 Smooth(Mn,1x1)

F2:Voltage SIR,EI+
407.8398
5.663e+005



GC/MS-SIMクロマトグラム

採取日：2013年7月2日

試料名：ドラム缶内容物 No.16

Quantify Sample Report MassLynx 4.0 SCN503

Dataset: ¥¥Kh213¥results¥N1ALU 30-38.qld

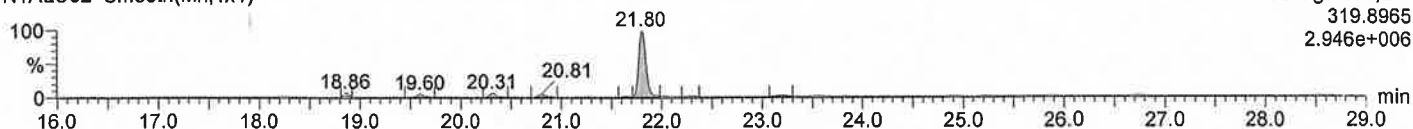
Last Altered: 2013年7月25日 14:08:27 東京 (標準時)
Printed: 2013年7月25日 14:10:10 東京 (標準時)

Date: 24-Jul-2013, Time: 00:11:01, Description: N774-16

TeCDD

N1ALU32 Smooth(Mn,1x1)

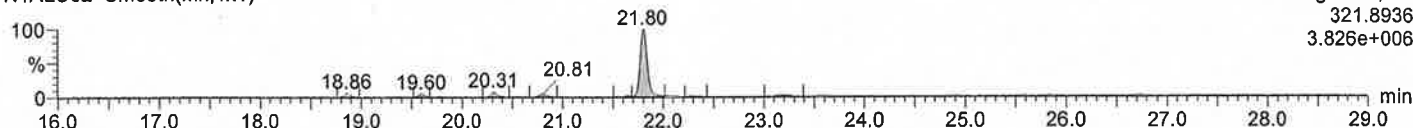
Voltage SIR,EI+
319.8965
2.946e+006



TeCDD

N1ALU32 Smooth(Mn,1x1)

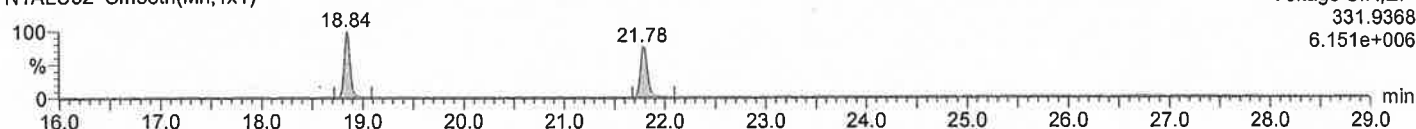
Voltage SIR,EI+
321.8936
3.826e+006



¹³C-TeCDD

N1ALU32 Smooth(Mn,1x1)

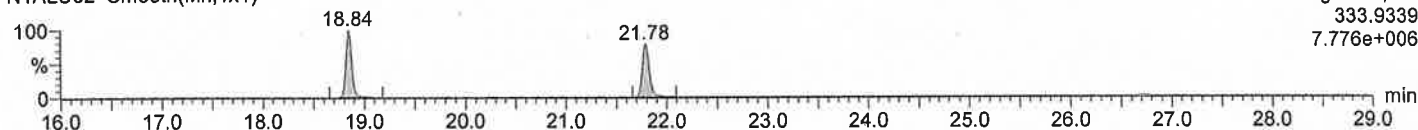
Voltage SIR,EI+
331.9368
6.151e+006



¹³C-TeCDD

N1ALU32 Smooth(Mn,1x1)

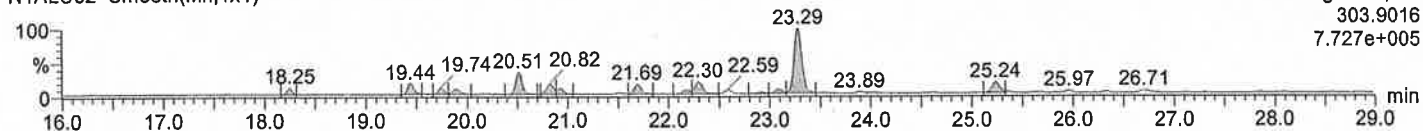
Voltage SIR,EI+
333.9339
7.776e+006



TeCDF

N1ALU32 Smooth(Mn,1x1)

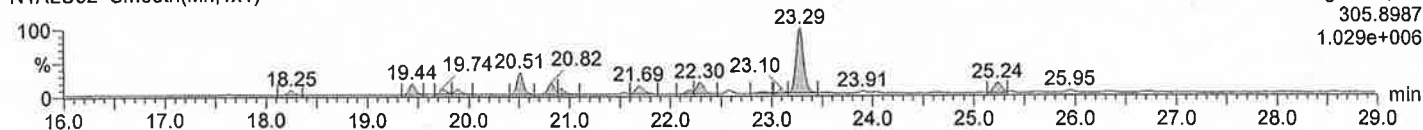
Voltage SIR,EI+
303.9016
7.727e+005



TeCDF

N1ALU32 Smooth(Mn,1x1)

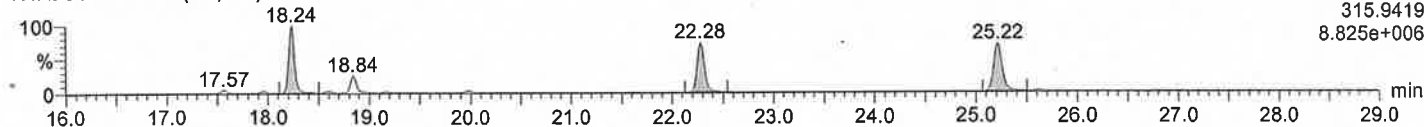
Voltage SIR,EI+
305.8987
1.029e+006



¹³C-TeCDF

N1ALU32 Smooth(Mn,1x1)

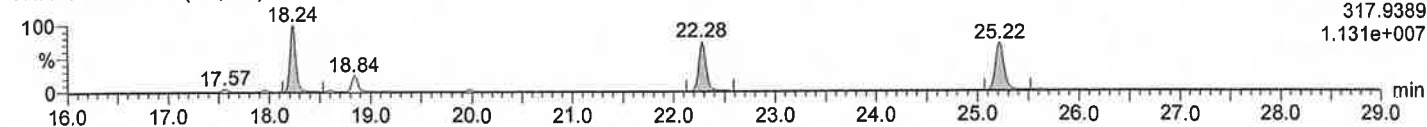
Voltage SIR,EI+
315.9419
8.825e+006



¹³C-TeCDF

N1ALU32 Smooth(Mn,1x1)

Voltage SIR,EI+
317.9389
1.131e+007



Quantify Sample Report MassLynx 4.0 SCN503

Dataset: ¥¥Kh213¥results¥N1ALU 30-38.qld

Last Altered: 2013年7月25日 14:08:27 東京 (標準時)

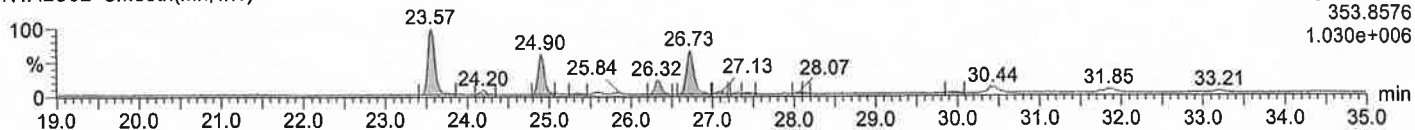
Printed: 2013年7月25日 14:10:10 東京 (標準時)

Date: 24-Jul-2013, Time: 00:11:01, Description: N774-16

PeCDDs

N1ALU32 Smooth(Mn,1x1)

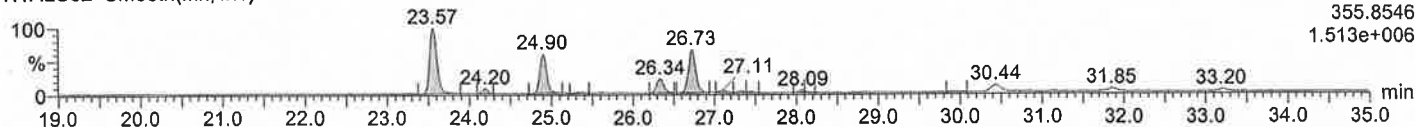
Voltage SIR, EI+
353.8576
1.030e+006



PeCDDs

N1ALU32 Smooth(Mn,1x1)

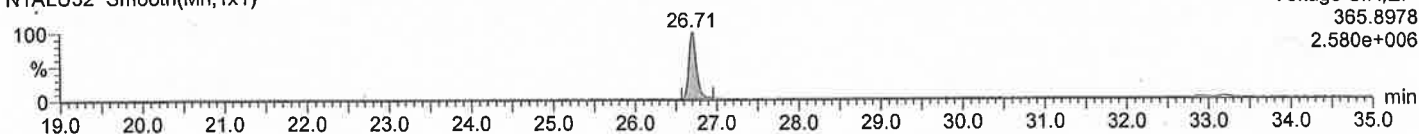
Voltage SIR, EI+
355.8546
1.513e+006



¹³C-PeCDD

N1ALU32 Smooth(Mn,1x1)

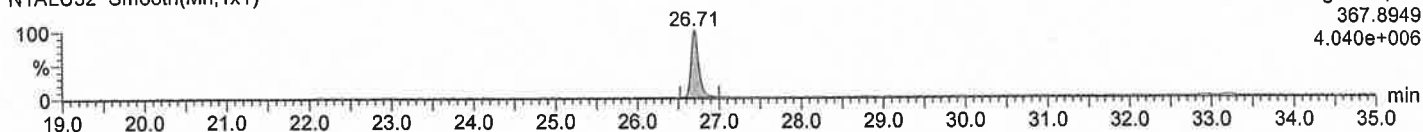
Voltage SIR, EI+
365.8978
2.580e+006



¹³C-PeCDD

N1ALU32 Smooth(Mn,1x1)

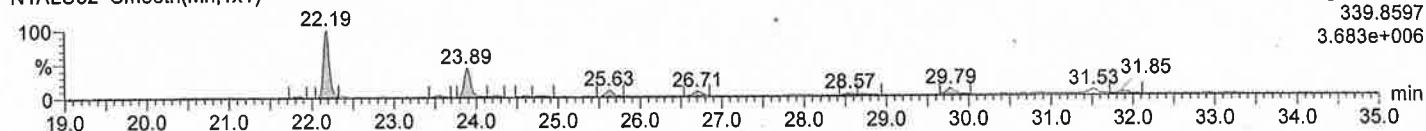
Voltage SIR, EI+
367.8949
4.040e+006



PeCDFs

N1ALU32 Smooth(Mn,1x1)

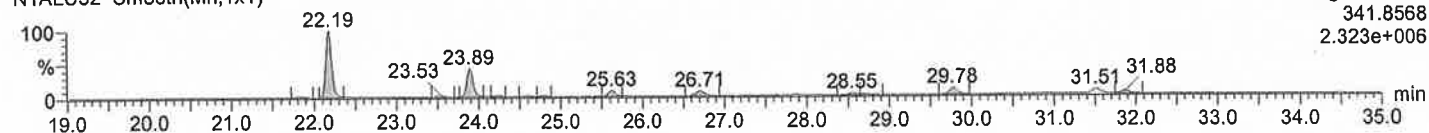
Voltage SIR, EI+
339.8597
3.683e+006



PeCDFs

N1ALU32 Smooth(Mn,1x1)

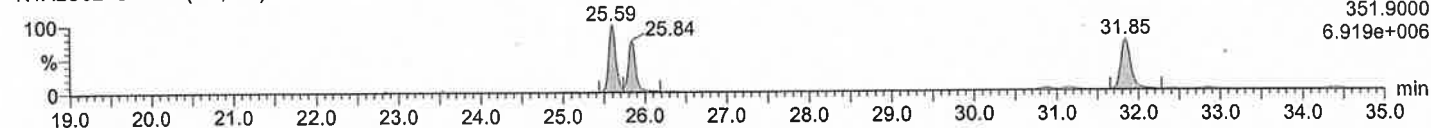
Voltage SIR, EI+
341.8568
2.323e+006



¹³C-PeCDF

N1ALU32 Smooth(Mn,1x1)

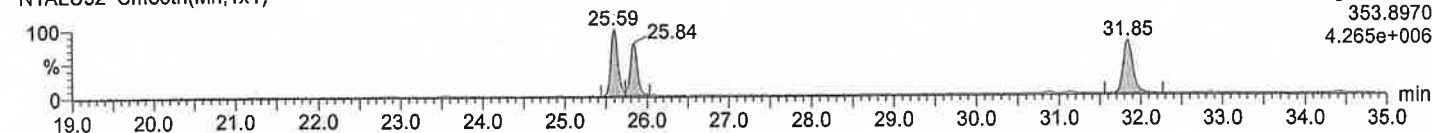
Voltage SIR, EI+
351.9000
6.919e+006



¹³C-PeCDF

N1ALU32 Smooth(Mn,1x1)

Voltage SIR, EI+
353.8970
4.265e+006



Quantify Sample Report MassLynx 4.0 SCN503

Dataset: ¥¥Kh213¥results¥N1ALU 30-38.qld

Last Altered: 2013年7月25日 14:08:27 東京 (標準時)

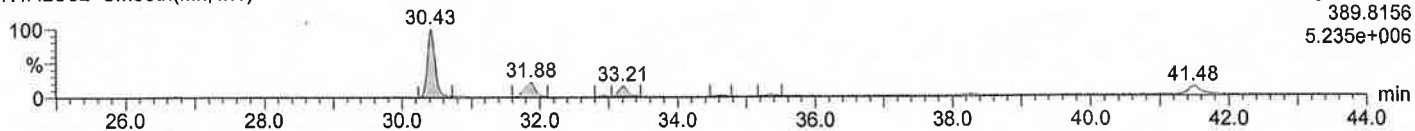
Printed: 2013年7月25日 14:10:10 東京 (標準時)

Date: 24-Jul-2013, Time: 00:11:01, Description: N774-16

HxCDDs

N1ALU32 Smooth(Mn,1x1)

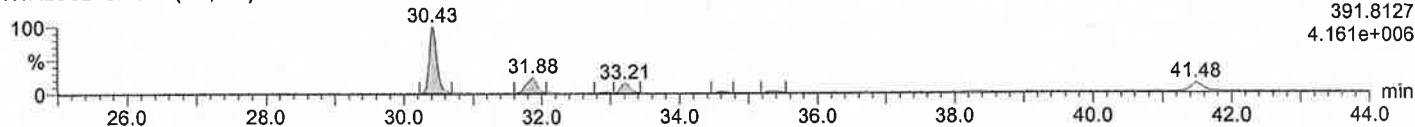
Voltage SIR,EI+
389.8156
5.235e+006



HxCDDs

N1ALU32 Smooth(Mn,1x1)

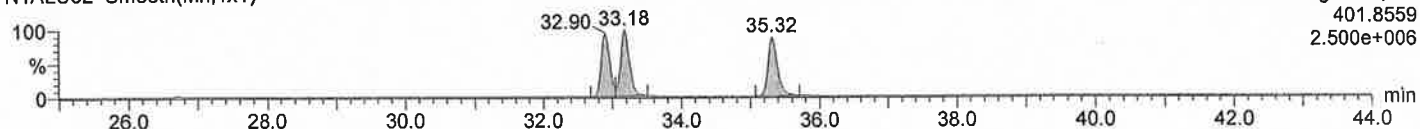
Voltage SIR,EI+
391.8127
4.161e+006



¹³C-HxCDD

N1ALU32 Smooth(Mn,1x1)

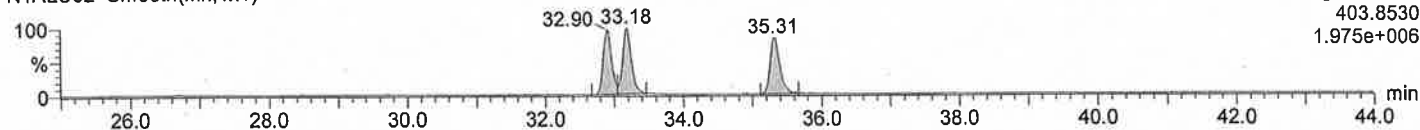
Voltage SIR,EI+
401.8559
2.500e+006



¹³C-HxCDD

N1ALU32 Smooth(Mn,1x1)

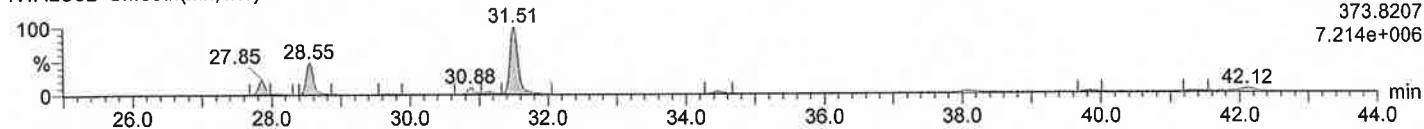
Voltage SIR,EI+
403.8530
1.975e+006



HxCDFs

N1ALU32 Smooth(Mn,1x1)

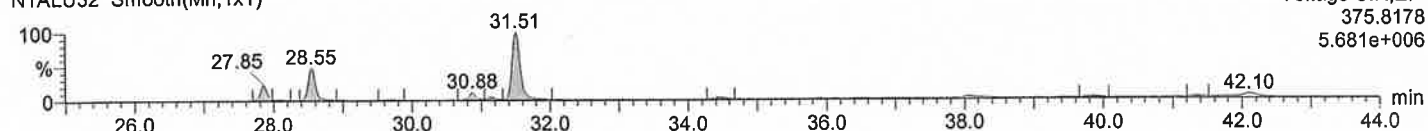
Voltage SIR,EI+
373.8207
7.214e+006



HxCDFs

N1ALU32 Smooth(Mn,1x1)

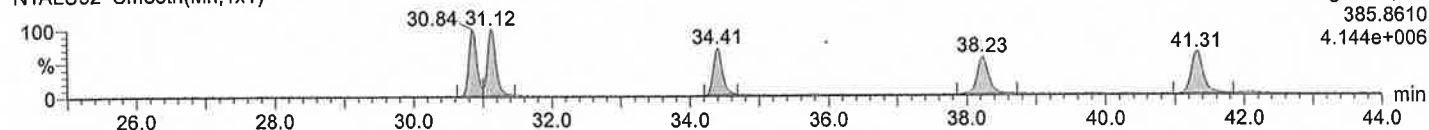
Voltage SIR,EI+
375.8178
5.681e+006



¹³C-HxCDF

N1ALU32 Smooth(Mn,1x1)

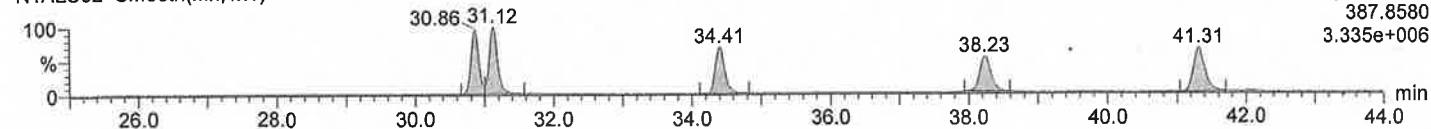
Voltage SIR,EI+
385.8610
4.144e+006



¹³C-HxCDF

N1ALU32 Smooth(Mn,1x1)

Voltage SIR,EI+
387.8580
3.335e+006



Quantify Sample Report MassLynx 4.0 SCN503

Dataset: ¥¥Kh213¥results¥U2AOX5-1.qld

Last Altered: 2013年7月25日 14:26:49 東京 (標準時)

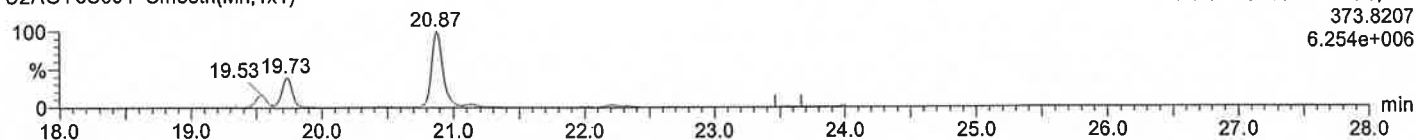
Printed: 2013年7月25日 14:28:28 東京 (標準時)

Date: 24-JUL-2013, Time: 18:39:12, Description: N774-16

1,2,3,7,8,9-HxCDF(DB)

U2AOY5S004 Smooth(Mn,1x1)

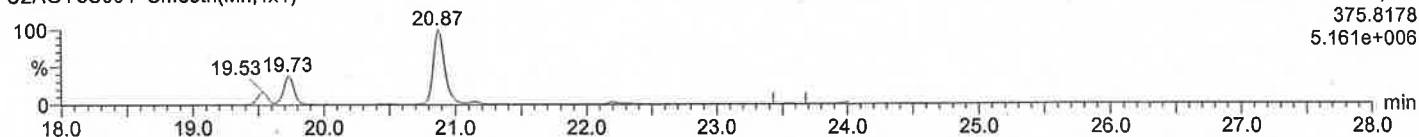
F1:SIR of 18 channels, EI+
373.8207
6.254e+006



1,2,3,7,8,9-HxCDF(DB)

U2AOY5S004 Smooth(Mn,1x1)

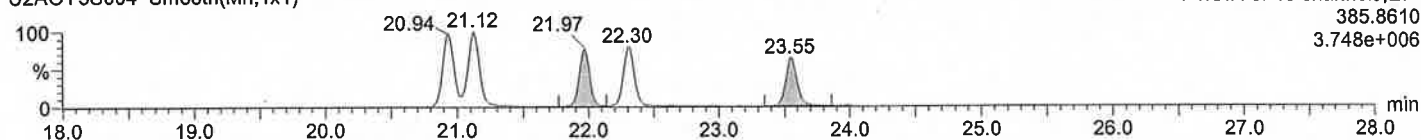
F1:SIR of 18 channels, EI+
375.8178
5.161e+006



13C-HxCDF(DB)

U2AOY5S004 Smooth(Mn,1x1)

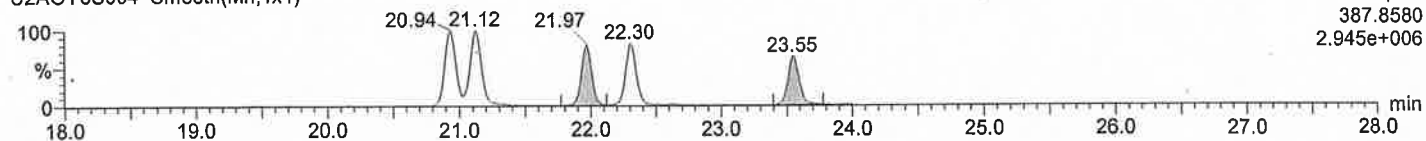
F1:SIR of 18 channels, EI+
385.8610
3.748e+006



13C-HxCDF(DB)

U2AOY5S004 Smooth(Mn,1x1)

F1:SIR of 18 channels, EI+
387.8580
2.945e+006



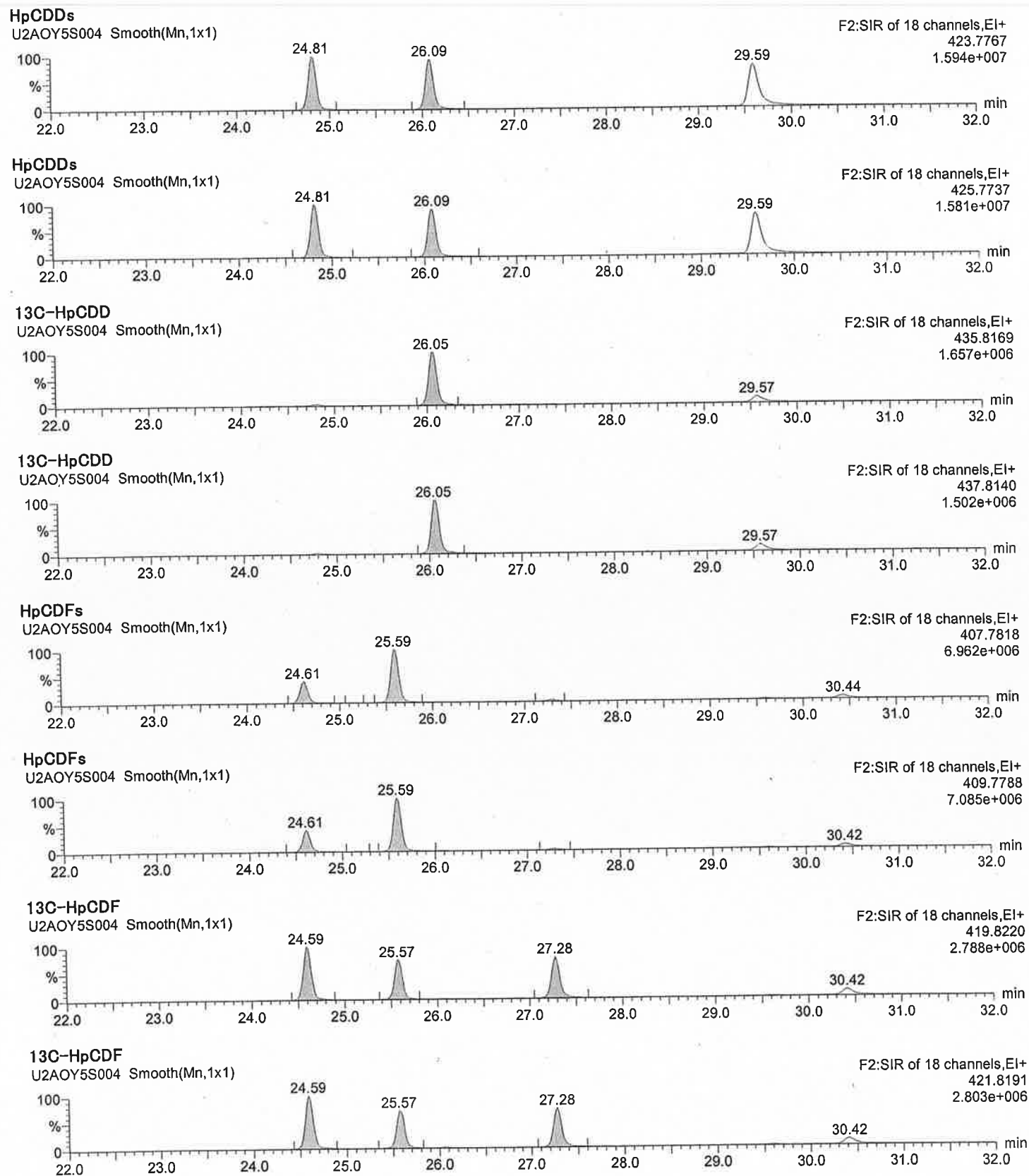
Quantify Sample Report MassLynx 4.0 SCN503

Dataset: ¥¥Kh213¥results¥U2AOX5-1.qld

Last Altered: 2013年7月25日 14:26:49 東京(標準時)

Printed: 2013年7月25日 14:28:28 東京(標準時)

Date: 24-JUL-2013, Time: 18:39:12, Description: N774-16



Dataset: ¥¥Kh213¥results¥U2AOX5-1.qld

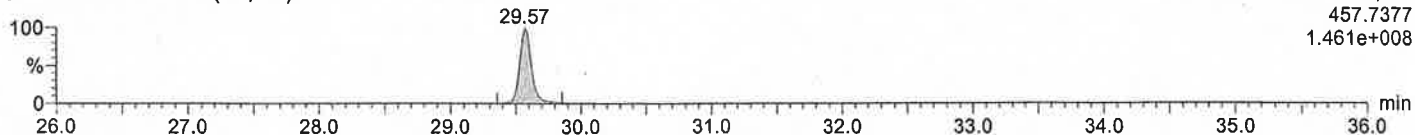
Last Altered: 2013年7月25日 14:26:49 東京 (標準時)
 Printed: 2013年7月25日 14:28:28 東京 (標準時)

Date: 24-JUL-2013, Time: 18:39:12, Description: N774-16

OCDD

U2AOY5S004 Smooth(Mn,1x1)

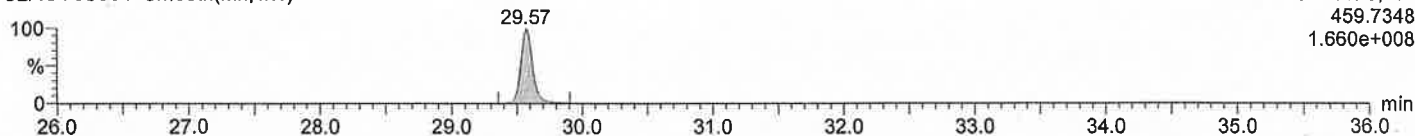
F2:SIR of 18 channels,EI+
 457.7377
 1.461e+008



OCDD

U2AOY5S004 Smooth(Mn,1x1)

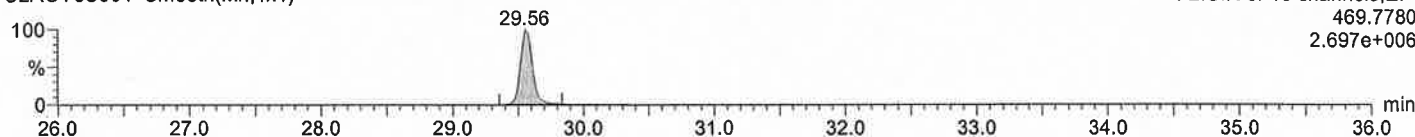
F2:SIR of 18 channels,EI+
 459.7348
 1.660e+008



13C-OCDD

U2AOY5S004 Smooth(Mn,1x1)

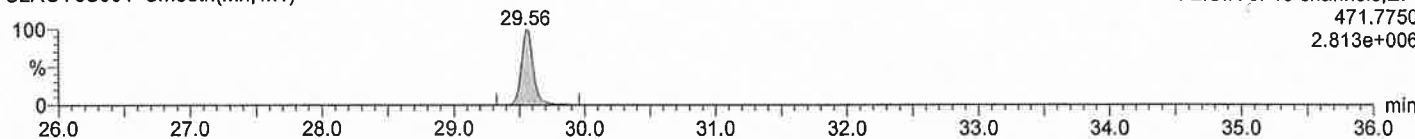
F2:SIR of 18 channels,EI+
 469.7780
 2.697e+006



13C-OCDD

U2AOY5S004 Smooth(Mn,1x1)

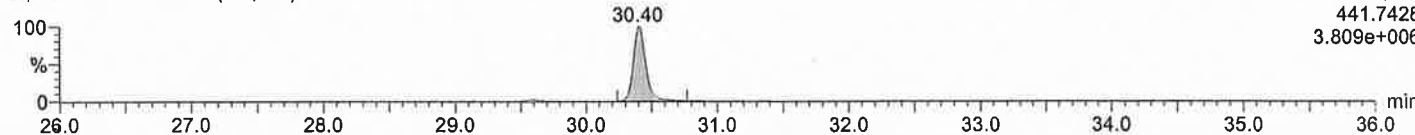
F2:SIR of 18 channels,EI+
 471.7750
 2.813e+006



OCDF

U2AOY5S004 Smooth(Mn,1x1)

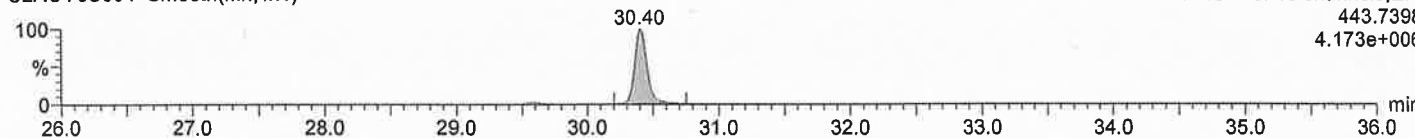
F2:SIR of 18 channels,EI+
 441.7428
 3.809e+006



OCDF

U2AOY5S004 Smooth(Mn,1x1)

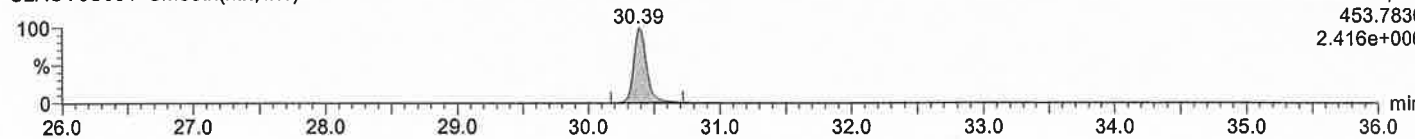
F2:SIR of 18 channels,EI+
 443.7398
 4.173e+006



13C-OCDF

U2AOY5S004 Smooth(Mn,1x1)

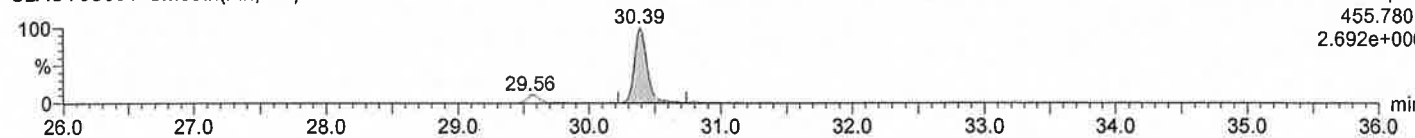
F2:SIR of 18 channels,EI+
 453.7830
 2.416e+006



13C-OCDF

U2AOY5S004 Smooth(Mn,1x1)

F2:SIR of 18 channels,EI+
 455.7801
 2.692e+006



Quantify Sample Report MassLynx 4.0 SCN503

Dataset: ¥¥Kh213¥results¥N2ZW 5-12.qld

Last Altered: 2013年7月25日 14:31:52 東京 (標準時)
Printed: 2013年7月25日 14:32:45 東京 (標準時)

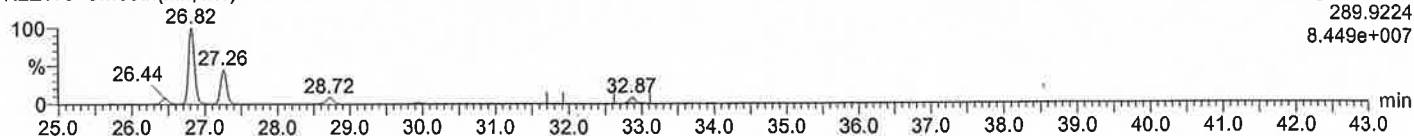
Method: C:¥MassLynx¥Default.pro¥Methdb¥N2Co-PCB N2ZW.mdb 24 7 2013 20:17:29
Calibration: C:¥MassLynx¥Default.pro¥Curvedb¥N2 DL-PCB CAL 130523.cdb 28 5 2013 16:55:02

Date: 24-Jul-2013, Time: 23:36:24, Description: N774-16

TeCB

N2ZW5 Smooth(Mn,1x1)

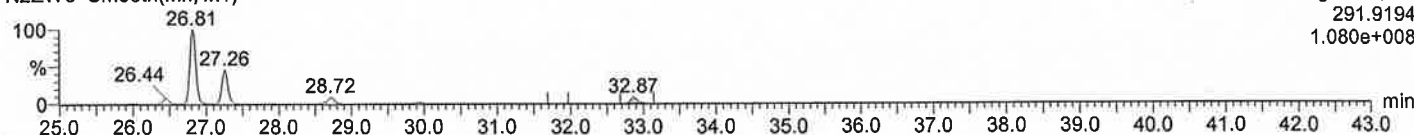
F1:Voltage SIR,EI+
289.9224
8.449e+007



TeCB

N2ZW5 Smooth(Mn,1x1)

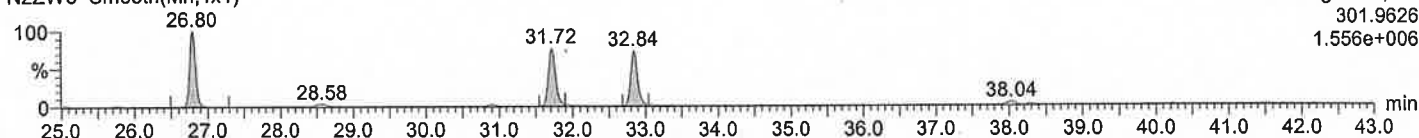
F1:Voltage SIR,EI+
291.9194
1.080e+008



13C-TeCB

N2ZW5 Smooth(Mn,1x1)

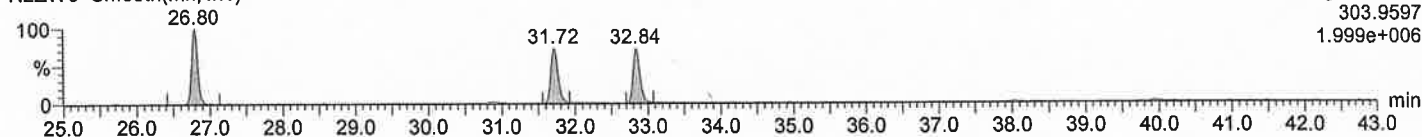
F1:Voltage SIR,EI+
301.9626
1.556e+006



13C-TeCB

N2ZW5 Smooth(Mn,1x1)

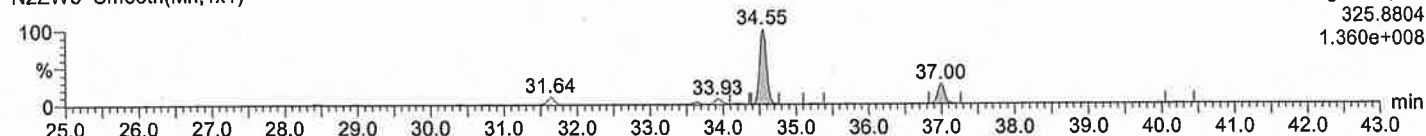
F1:Voltage SIR,EI+
303.9597
1.999e+006



PeCB

N2ZW5 Smooth(Mn,1x1)

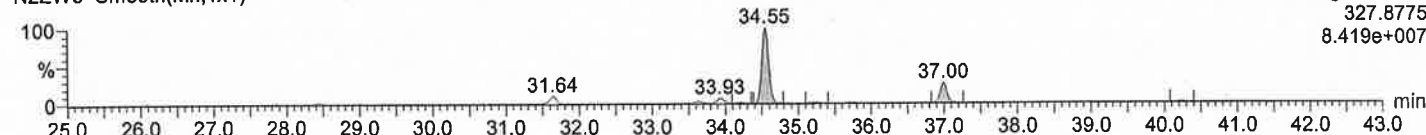
F1:Voltage SIR,EI+
325.8804
1.360e+008



PeCB

N2ZW5 Smooth(Mn,1x1)

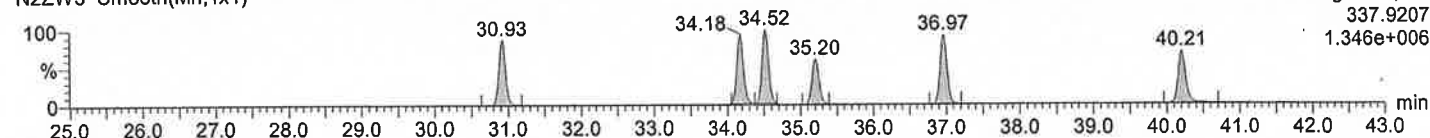
F1:Voltage SIR,EI+
327.8775
8.419e+007



13C-PeCB

N2ZW5 Smooth(Mn,1x1)

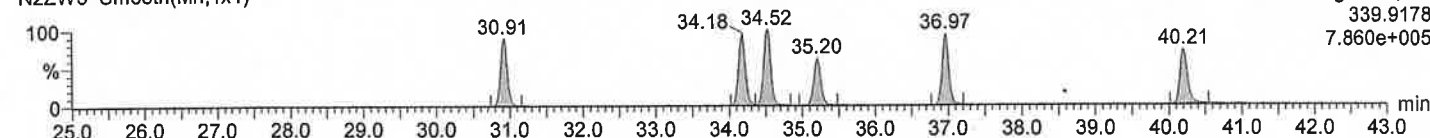
F1:Voltage SIR,EI+
337.9207
1.346e+006



13C-PeCB

N2ZW5 Smooth(Mn,1x1)

F1:Voltage SIR,EI+
339.9178
7.860e+005



Quantify Sample Report MassLynx 4.0 SCN503

Dataset: ¥¥Kh213¥results¥N2ZW 5-12.qld

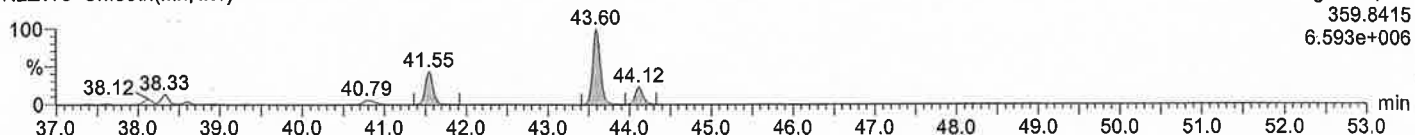
Last Altered: 2013年7月25日 14:31:52 東京 (標準時)
Printed: 2013年7月25日 14:32:45 東京 (標準時)

Date: 24-Jul-2013, Time: 23:36:24, Description: N774-16

HxCB

N2ZW5 Smooth(Mn,1x1)

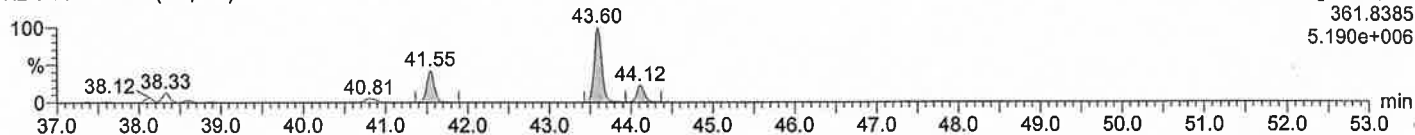
F1:Voltage SIR,EI+
359.8415
6.593e+006



HxCB

N2ZW5 Smooth(Mn,1x1)

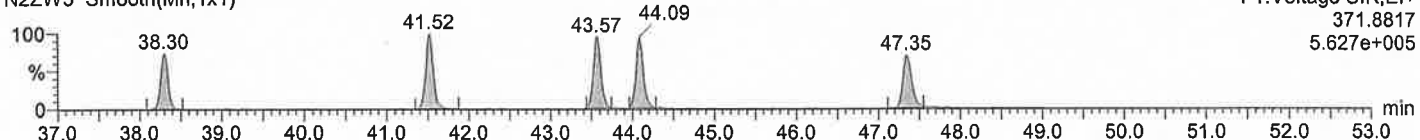
F1:Voltage SIR,EI+
361.8385
5.190e+006



13C-HxCB

N2ZW5 Smooth(Mn,1x1)

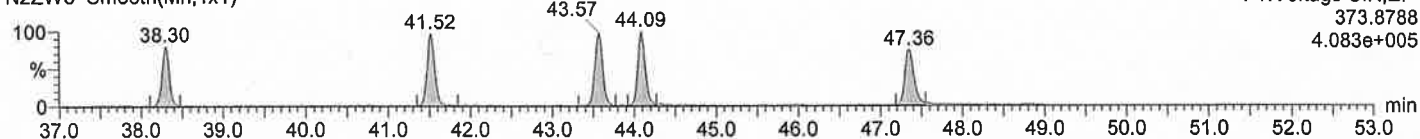
F1:Voltage SIR,EI+
371.8817
5.627e+005



13C-HxCB

N2ZW5 Smooth(Mn,1x1)

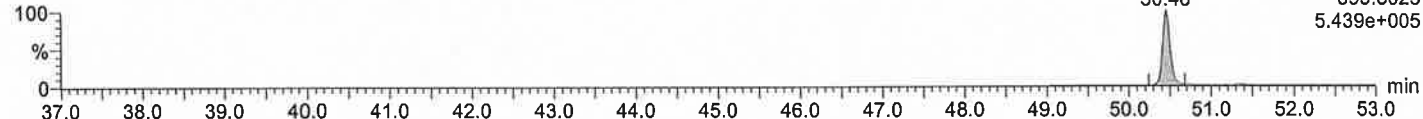
F1:Voltage SIR,EI+
373.8788
4.083e+005



HpCB

N2ZW5 Smooth(Mn,1x1)

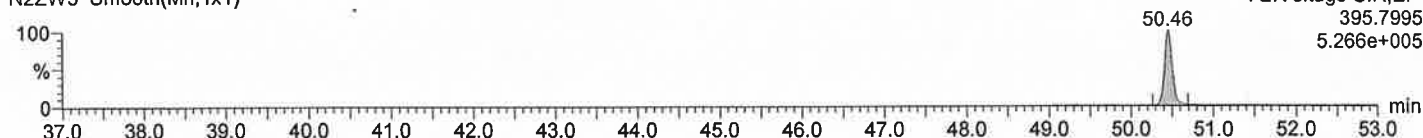
F2:Voltage SIR,EI+
393.8025
5.439e+005



HpCB

N2ZW5 Smooth(Mn,1x1)

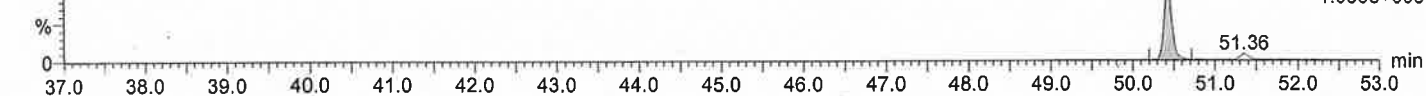
F2:Voltage SIR,EI+
395.7995
5.266e+005



13C-HpCB

N2ZW5 Smooth(Mn,1x1)

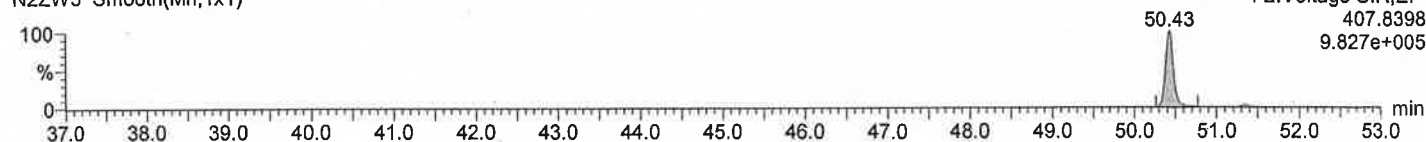
F2:Voltage SIR,EI+
405.8428
1.030e+006



13C-HpCB

N2ZW5 Smooth(Mn,1x1)

F2:Voltage SIR,EI+
407.8398
9.827e+005



GC/MS-SIMクロマトグラム

採取日：2013年7月2日

試料名：ドラム缶内容物 No.17

Quantify Sample Report MassLynx 4.0 SCN503

Dataset: ¥¥Kh213¥results¥N1ALU 30-38.qld

Last Altered: 2013年7月25日 14:08:27 東京 (標準時)

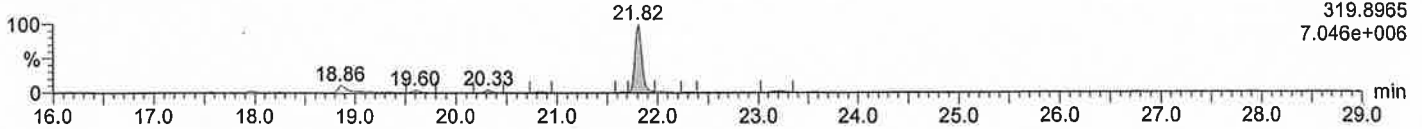
Printed: 2013年7月25日 14:10:10 東京 (標準時)

Date: 24-Jul-2013, Time: 01:17:14, Description: N774-17

TeCDD

N1ALU33 Smooth(Mn,1x1)

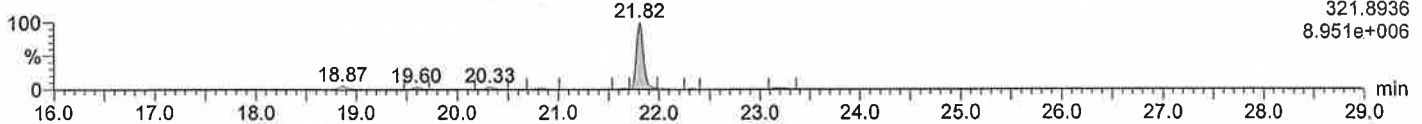
Voltage SIR,EI+
319.8965
7.046e+006



TeCDD

N1ALU33 Smooth(Mn,1x1)

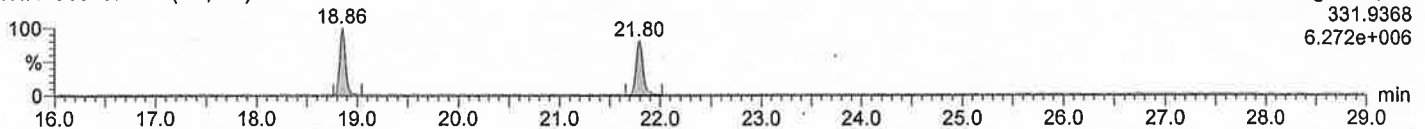
Voltage SIR,EI+
321.8936
8.951e+006



13C-TeCDD

N1ALU33 Smooth(Mn,1x1)

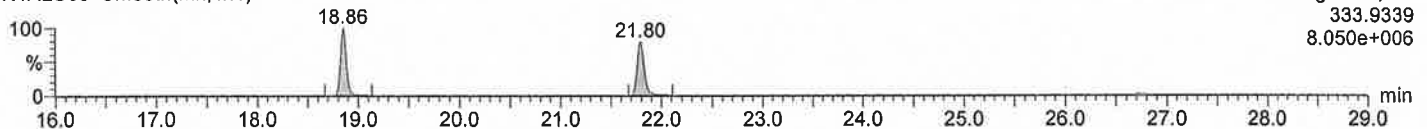
Voltage SIR,EI+
331.9368
6.272e+006



13C-TeCDD

N1ALU33 Smooth(Mn,1x1)

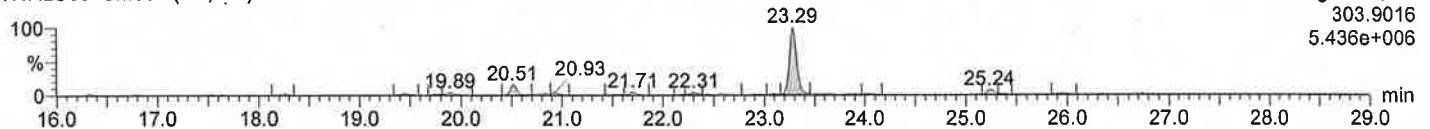
Voltage SIR,EI+
333.9339
8.050e+006



TeCDF

N1ALU33 Smooth(Mn,1x1)

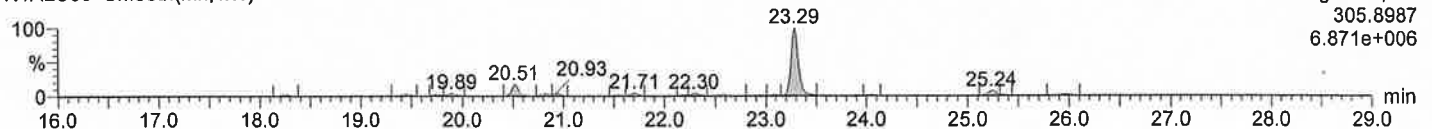
Voltage SIR,EI+
303.9016
5.436e+006



TeCDF

N1ALU33 Smooth(Mn,1x1)

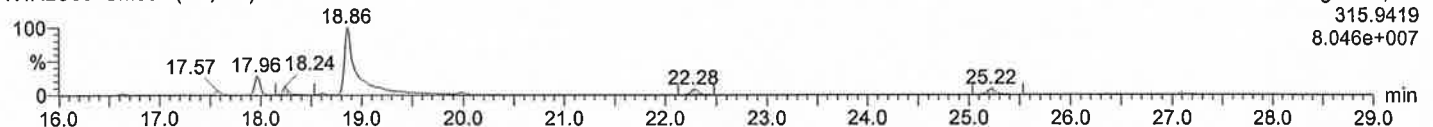
Voltage SIR,EI+
305.8987
6.871e+006



13C-TeCDF

N1ALU33 Smooth(Mn,1x1)

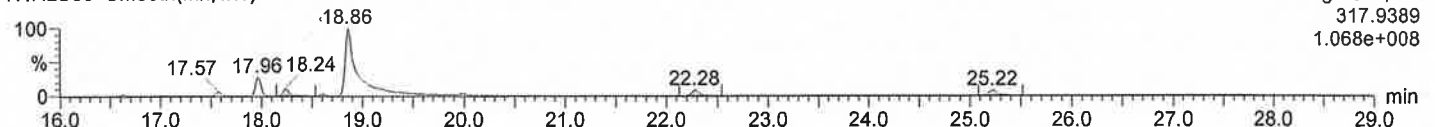
Voltage SIR,EI+
315.9419
8.046e+007



13C-TeCDF

N1ALU33 Smooth(Mn,1x1)

Voltage SIR,EI+
317.9389
1.068e+008



Quantify Sample Report MassLynx 4.0 SCN503

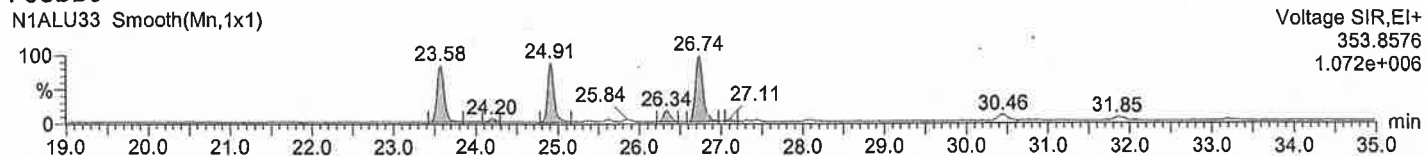
Dataset: ¥¥Kh213¥results¥N1ALU 30-38.qld

Last Altered: 2013年7月25日 14:08:27 東京 (標準時)

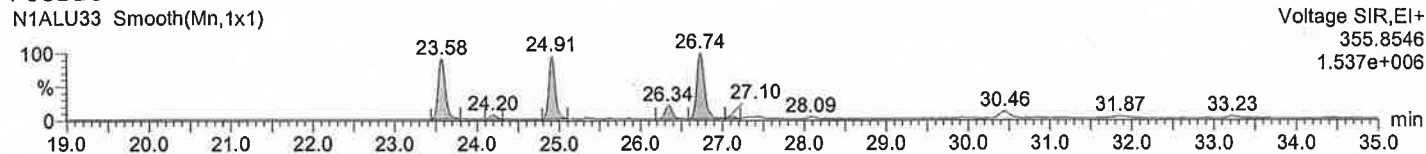
Printed: 2013年7月25日 14:10:10 東京 (標準時)

Date: 24-Jul-2013, Time: 01:17:14, Description: N774-17

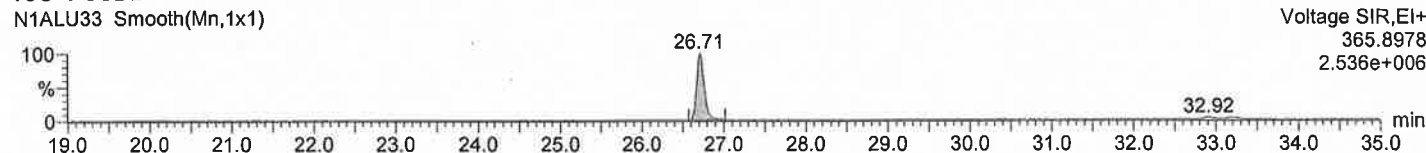
PeCDDs



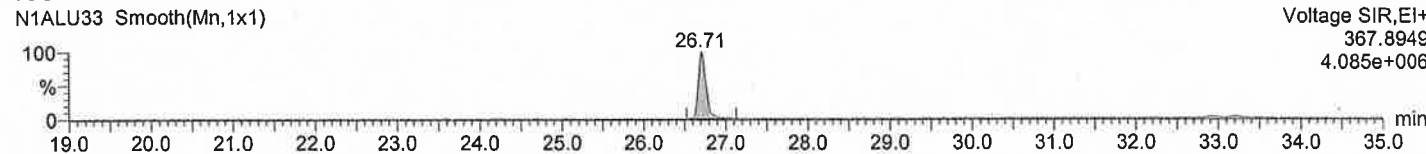
PeCDDs



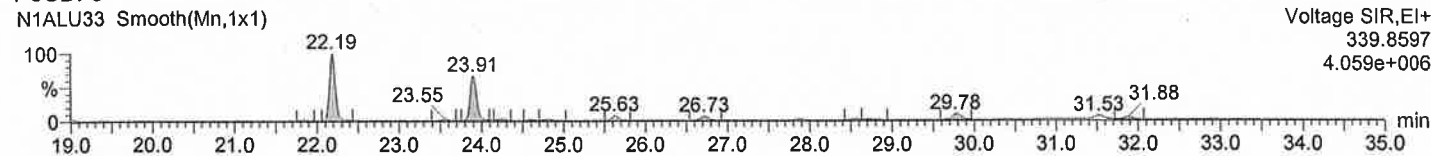
13C-PeCDD



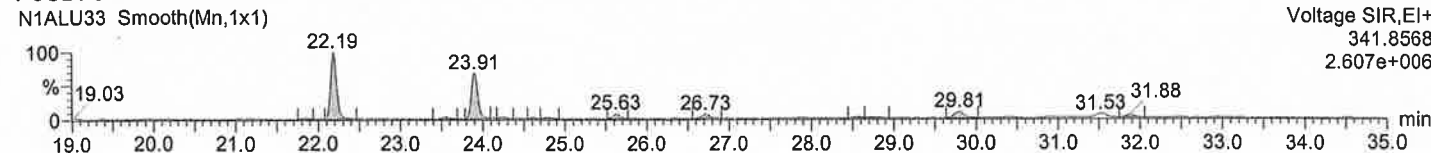
13C-PeCDD



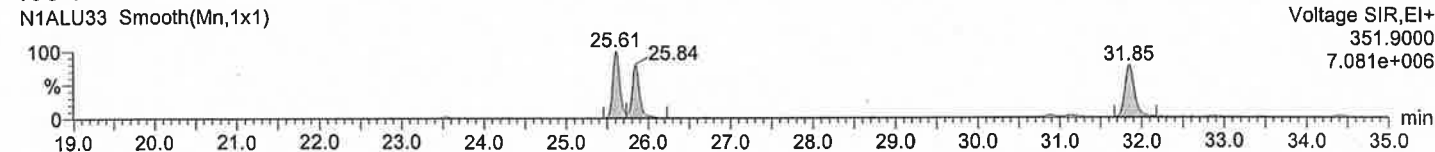
PeCDFs



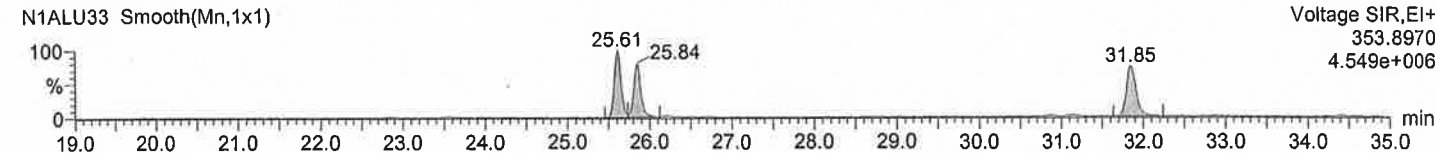
PeCDFs



13C-PeCDF



13C-PeCDF



Quantify Sample Report MassLynx 4.0 SCN503

Dataset: ¥¥Kh213¥results¥N1ALU 30-38.qld

Last Altered: 2013年7月25日 14:08:27 東京 (標準時)

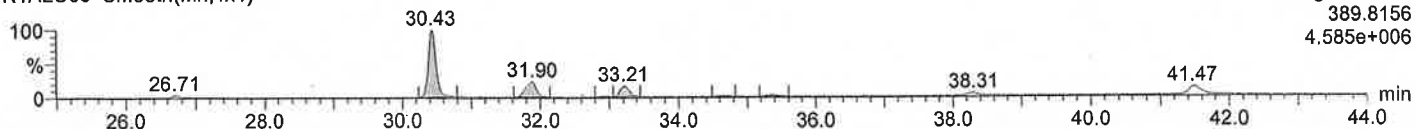
Printed: 2013年7月25日 14:10:10 東京 (標準時)

Date: 24-Jul-2013, Time: 01:17:14, Description: N774-17

HxCDDs

N1ALU33 Smooth(Mn,1x1)

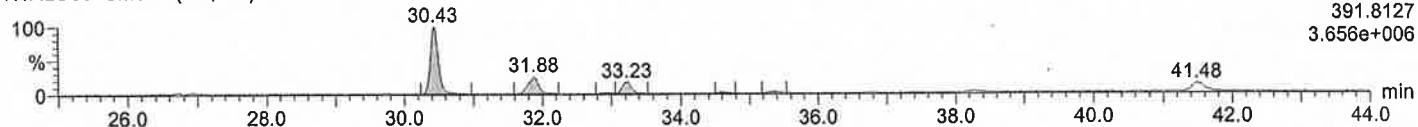
Voltage SIR,EI+
389.8156
4.585e+006



HxCDDs

N1ALU33 Smooth(Mn,1x1)

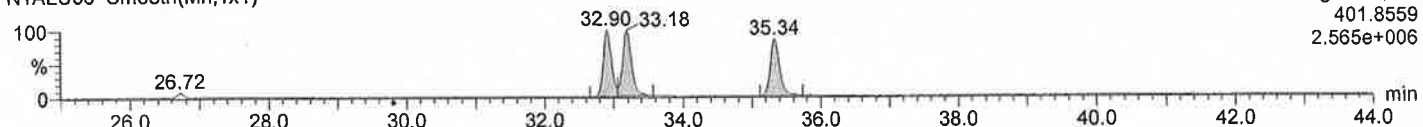
Voltage SIR,EI+
391.8127
3.656e+006



¹³C-HxCDD

N1ALU33 Smooth(Mn,1x1)

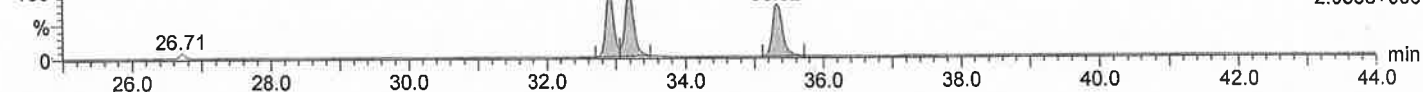
Voltage SIR,EI+
401.8559
2.565e+006



¹³C-HxCDD

N1ALU33 Smooth(Mn,1x1)

Voltage SIR,EI+
403.8530
2.033e+006



HxCDFs

N1ALU33 Smooth(Mn,1x1)

Voltage SIR,EI+
373.8207
7.809e+006



HxCDFs

N1ALU33 Smooth(Mn,1x1)

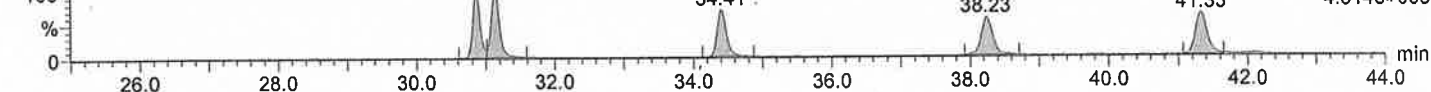
Voltage SIR,EI+
375.8178
5.975e+006



¹³C-HxCDF

N1ALU33 Smooth(Mn,1x1)

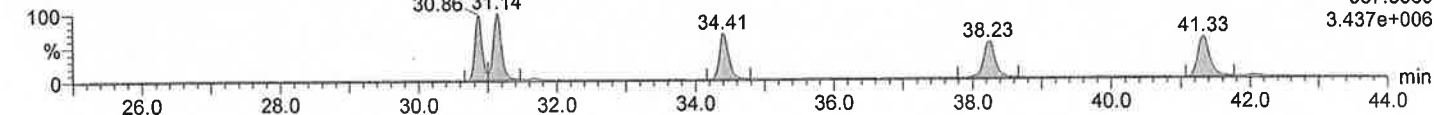
Voltage SIR,EI+
385.8610
4.314e+006



¹³C-HxCDF

N1ALU33 Smooth(Mn,1x1)

Voltage SIR,EI+
387.8580
3.437e+006



Quantify Sample Report MassLynx 4.0 SCN503

Dataset: ¥¥Kh213¥results¥U2AOX5-1.qld

Last Altered: 2013年7月25日 14:26:49 東京 (標準時)

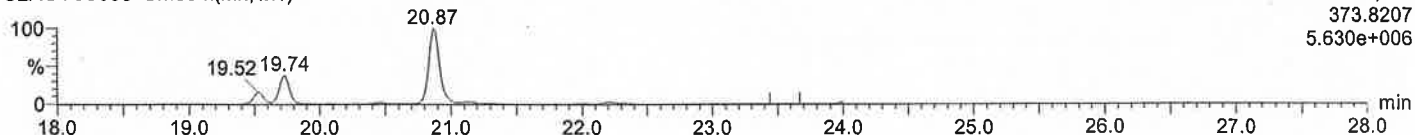
Printed: 2013年7月25日 14:28:28 東京 (標準時)

Date: 24-JUL-2013, Time: 19:25:09, Description: N774-17

1,2,3,7,8,9-HxCDF(DB)

U2AOY5S005 Smooth(Mn,1x1)

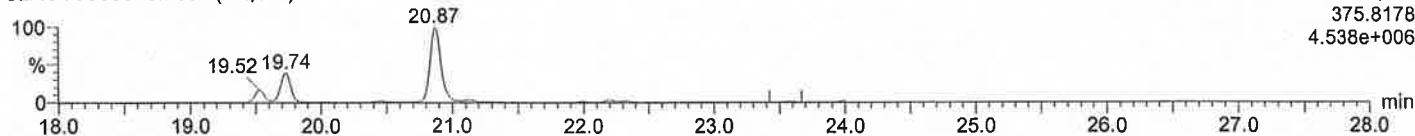
F1:SIR of 18 channels,EI+
373.8207
5.630e+006



1,2,3,7,8,9-HxCDF(DB)

U2AOY5S005 Smooth(Mn,1x1)

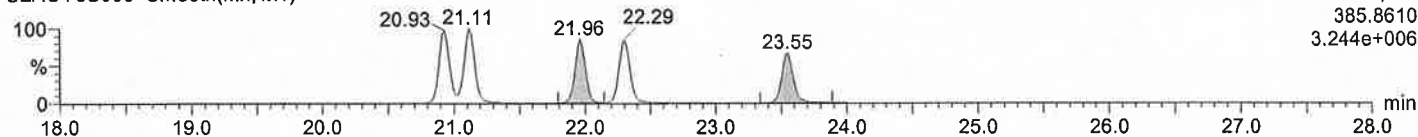
F1:SIR of 18 channels,EI+
375.8178
4.538e+006



13C-HxCDF(DB)

U2AOY5S005 Smooth(Mn,1x1)

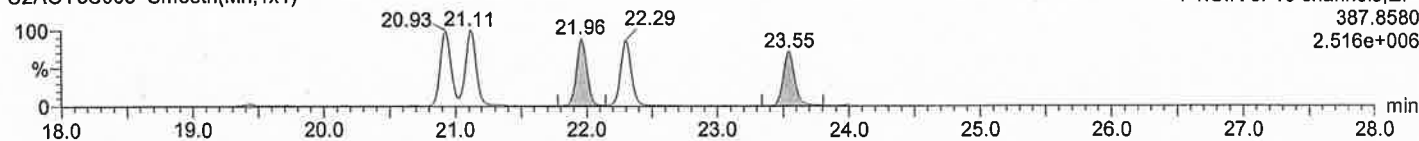
F1:SIR of 18 channels,EI+
385.8610
3.244e+006



13C-HxCDF(DB)

U2AOY5S005 Smooth(Mn,1x1)

F1:SIR of 18 channels,EI+
387.8580
2.516e+006



Quantify Sample Report MassLynx 4.0 SCN503

Dataset: ¥¥Kh213¥results¥U2AOX5-1.qld

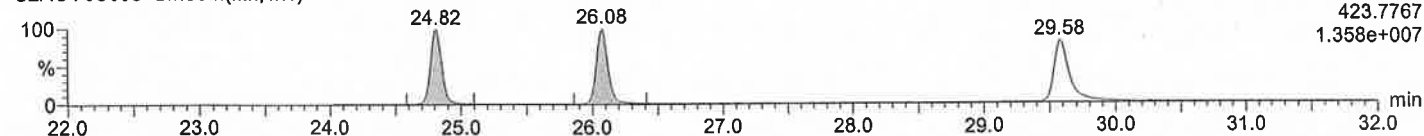
Last Altered: 2013年7月25日 14:26:49 東京 (標準時)

Printed: 2013年7月25日 14:28:28 東京 (標準時)

Date: 24-JUL-2013, Time: 19:25:09, Description: N774-17

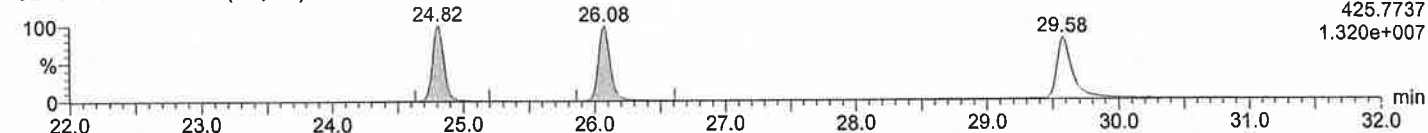
HpCDDs

U2AOY5S005 Smooth(Mn,1x1)



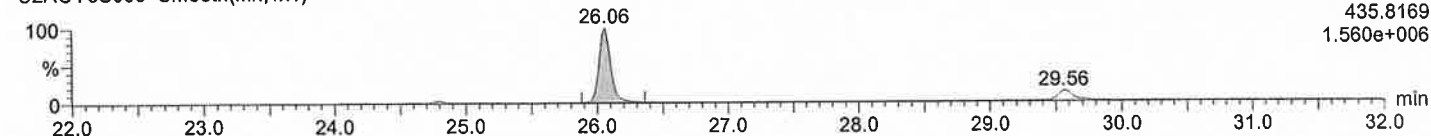
HpCDDs

U2AOY5S005 Smooth(Mn,1x1)



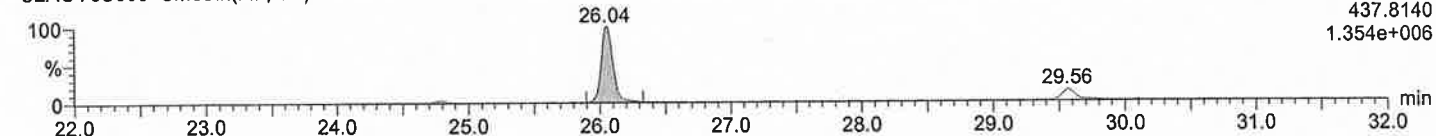
¹³C-HpCDD

U2AOY5S005 Smooth(Mn,1x1)



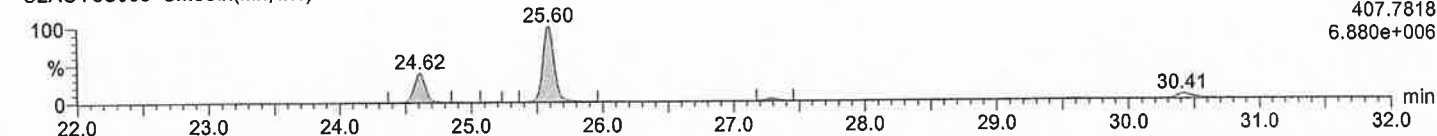
¹³C-HpCDD

U2AOY5S005 Smooth(Mn,1x1)



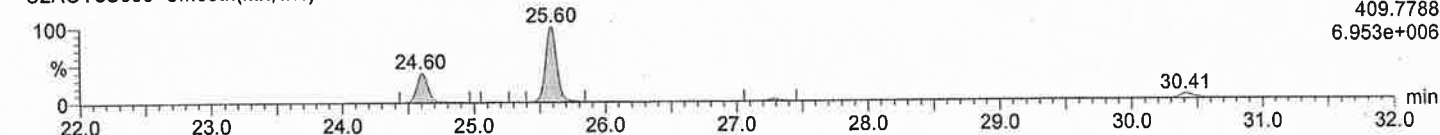
HpCDFs

U2AOY5S005 Smooth(Mn,1x1)



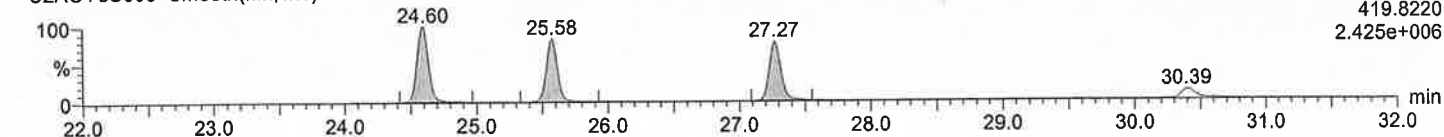
HpCDFs

U2AOY5S005 Smooth(Mn,1x1)



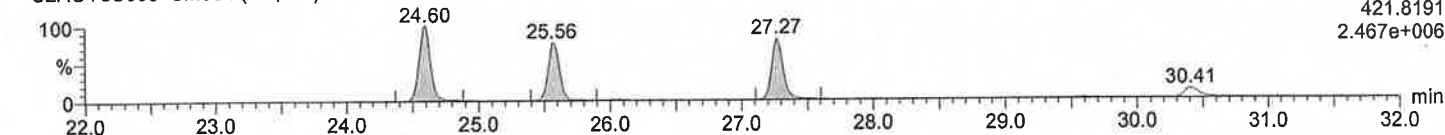
¹³C-HpCDF

U2AOY5S005 Smooth(Mn,1x1)



¹³C-HpCDF

U2AOY5S005 Smooth(Mn,1x1)



Quantify Sample Report MassLynx 4.0 SCN503

Dataset: ¥¥Kh213¥results¥U2AOX5-1.qld

Last Altered: 2013年7月25日 14:26:49 東京 (標準時)

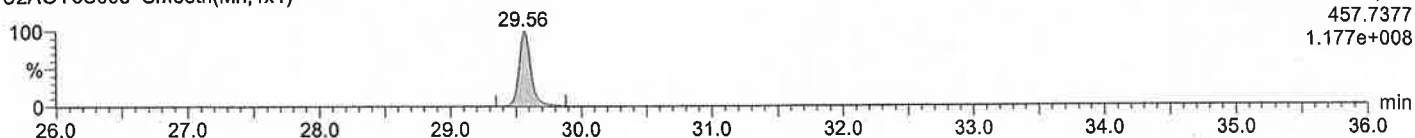
Printed: 2013年7月25日 14:28:28 東京 (標準時)

Date: 24-JUL-2013, Time: 19:25:09, Description: N774-17

OCDD

U2AOY5S005 Smooth(Mn,1x1)

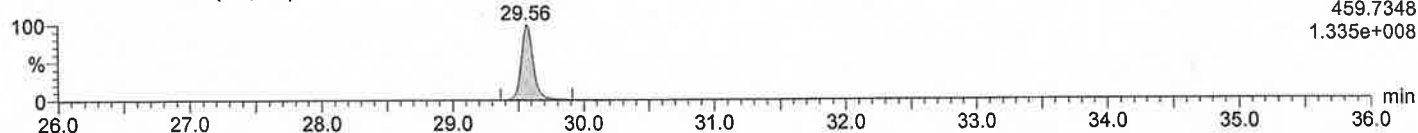
F2:SIR of 18 channels,EI+
457.7377
1.177e+008



OCDD

U2AOY5S005 Smooth(Mn,1x1)

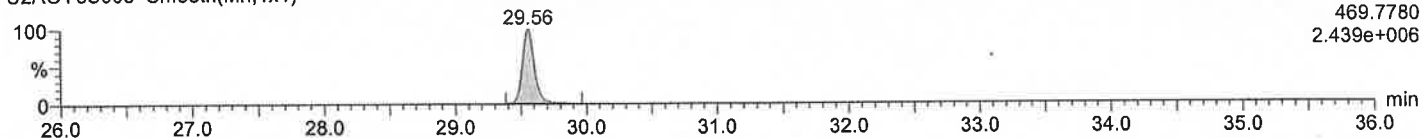
F2:SIR of 18 channels,EI+
459.7348
1.335e+008



13C-OCDD

U2AOY5S005 Smooth(Mn,1x1)

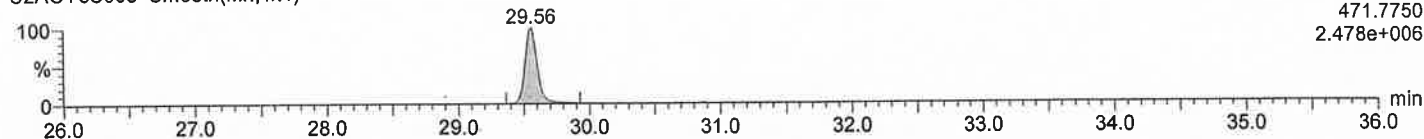
F2:SIR of 18 channels,EI+
469.7780
2.439e+006



13C-OCDD

U2AOY5S005 Smooth(Mn,1x1)

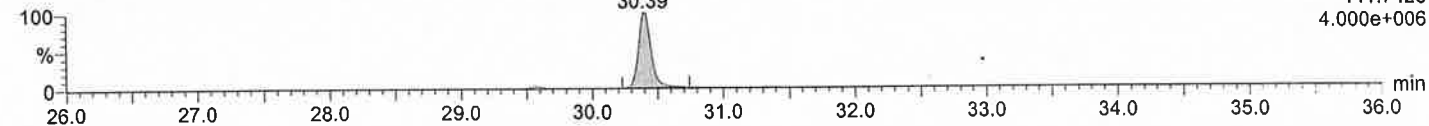
F2:SIR of 18 channels,EI+
471.7750
2.478e+006



OCDF

U2AOY5S005 Smooth(Mn,1x1)

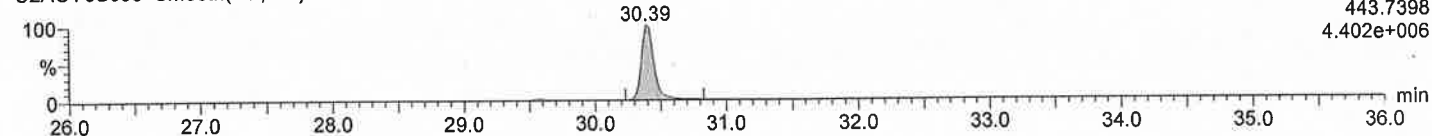
F2:SIR of 18 channels,EI+
441.7428
4.000e+006



OCDF

U2AOY5S005 Smooth(Mn,1x1)

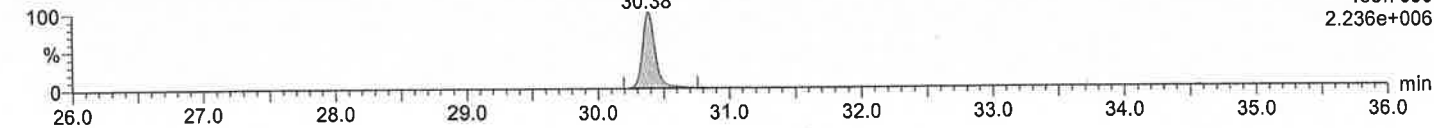
F2:SIR of 18 channels,EI+
443.7398
4.402e+006



13C-OCDF

U2AOY5S005 Smooth(Mn,1x1)

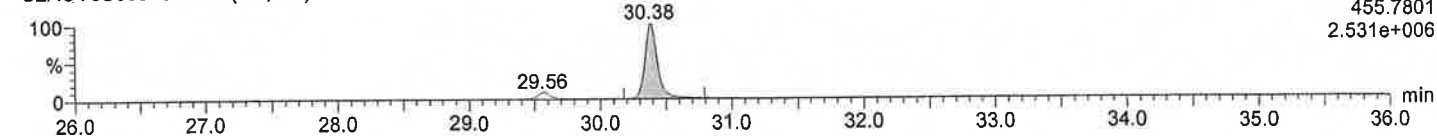
F2:SIR of 18 channels,EI+
453.7830
2.236e+006



13C-OCDF

U2AOY5S005 Smooth(Mn,1x1)

F2:SIR of 18 channels,EI+
455.7801
2.531e+006



Dataset: ¥¥Kh213¥results¥N2ZW 5-12.qld

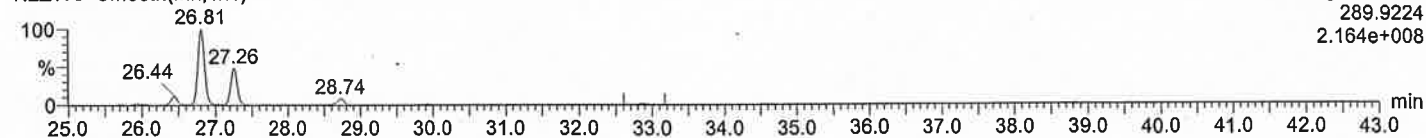
Last Altered: 2013年7月25日 14:31:52 東京 (標準時)

Printed: 2013年7月25日 14:32:45 東京 (標準時)

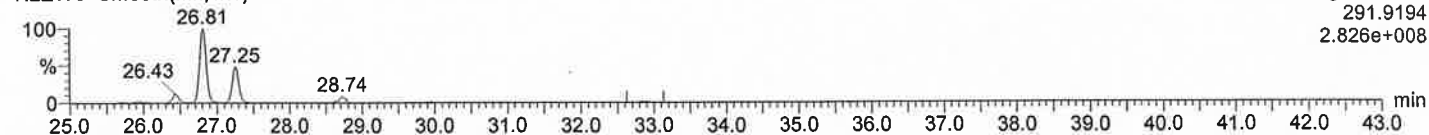
Date: 25-Jul-2013, Time: 00:39:59, Description: N774-17

TeCB

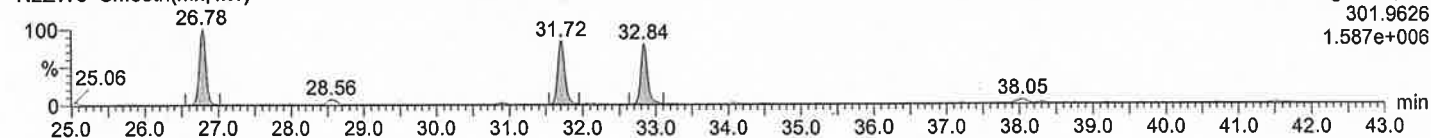
N2ZW6 Smooth(Mn,1x1)

**TeCB**

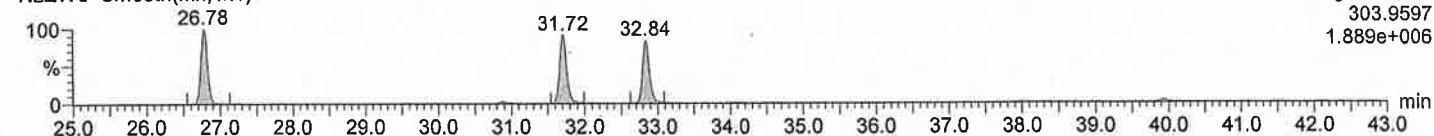
N2ZW6 Smooth(Mn,1x1)

**¹³C-TeCB**

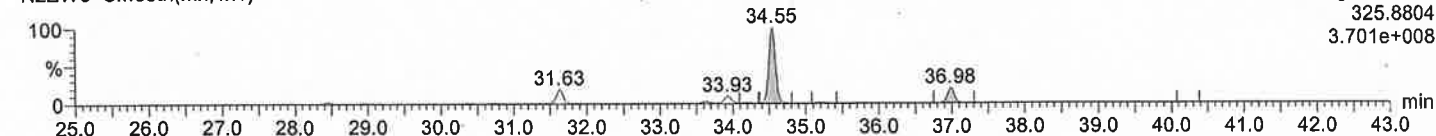
N2ZW6 Smooth(Mn,1x1)

**¹³C-TeCB**

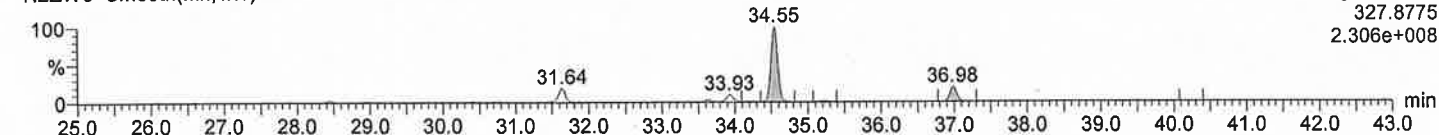
N2ZW6 Smooth(Mn,1x1)

**PeCB**

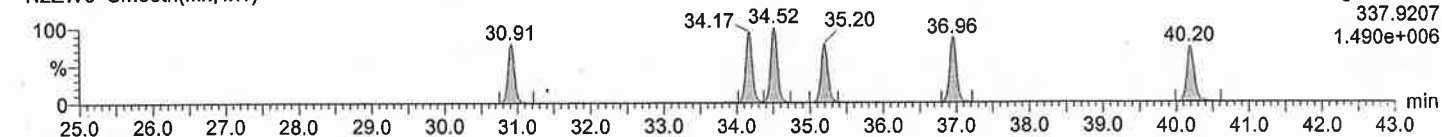
N2ZW6 Smooth(Mn,1x1)

**PeCB**

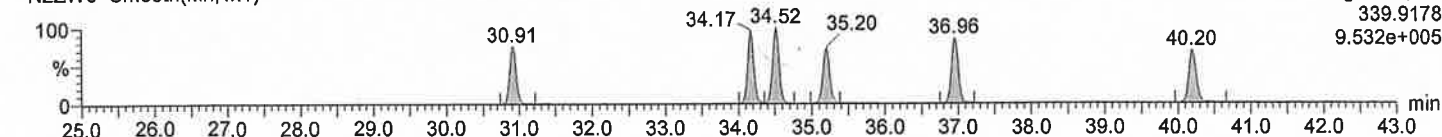
N2ZW6 Smooth(Mn,1x1)

**¹³C-PeCB**

N2ZW6 Smooth(Mn,1x1)

**¹³C-PeCB**

N2ZW6 Smooth(Mn,1x1)



Quantify Sample Report MassLynx 4.0 SCN503

Dataset: ¥¥Kh213¥results¥N2ZW 5-12.qld

Last Altered: 2013年7月25日 14:31:52 東京 (標準時)

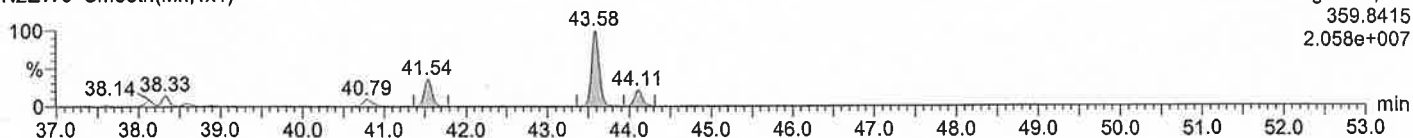
Printed: 2013年7月25日 14:32:45 東京 (標準時)

Date: 25-Jul-2013, Time: 00:39:59, Description: N774-17

HxCB

N2ZW6 Smooth(Mn,1x1)

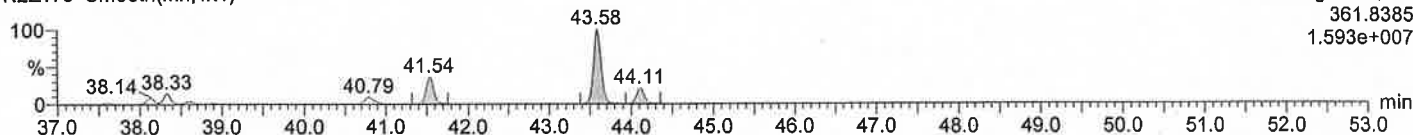
F1:Voltage SIR,EI+
359.8415
2.058e+007



HxCB

N2ZW6 Smooth(Mn,1x1)

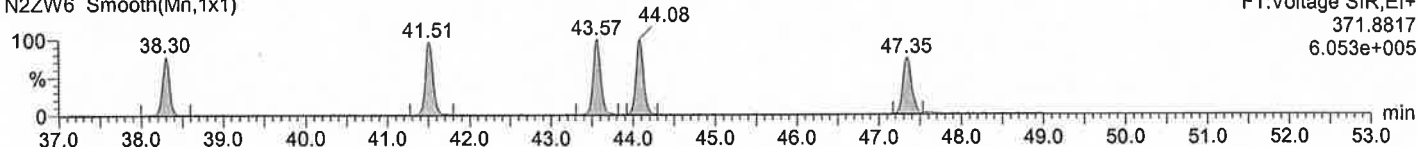
F1:Voltage SIR,EI+
361.8385
1.593e+007



¹³C-HxCB

N2ZW6 Smooth(Mn,1x1)

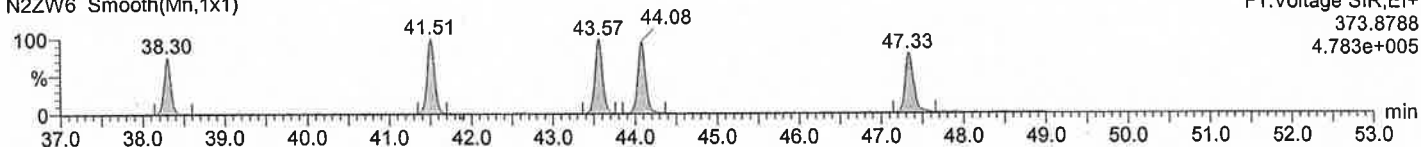
F1:Voltage SIR,EI+
371.8817
6.053e+005



¹³C-HxCB

N2ZW6 Smooth(Mn,1x1)

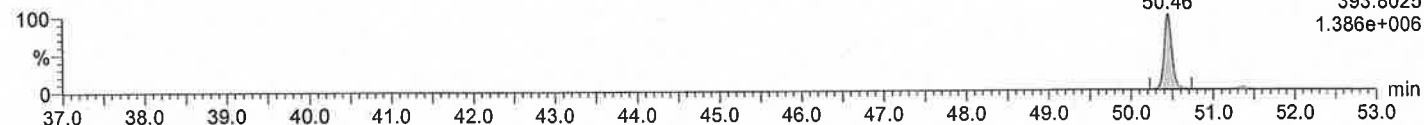
F1:Voltage SIR,EI+
373.8788
4.783e+005



HpCB

N2ZW6 Smooth(Mn,1x1)

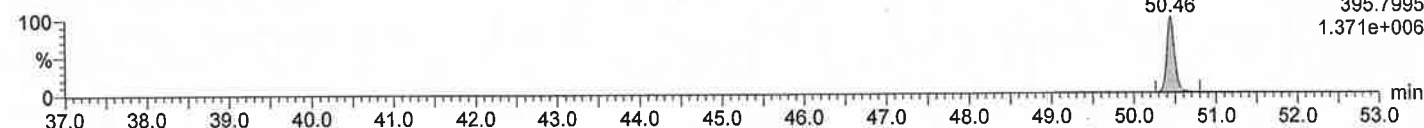
F2:Voltage SIR,EI+
393.8025
1.386e+006



HpCB

N2ZW6 Smooth(Mn,1x1)

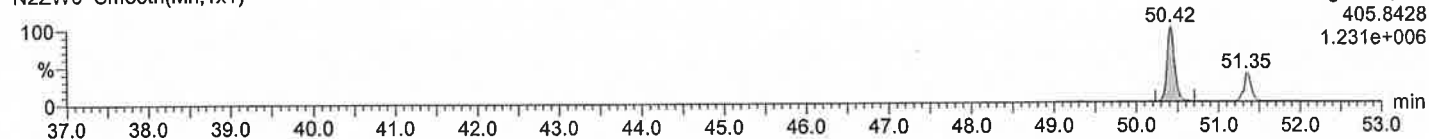
F2:Voltage SIR,EI+
395.7995
1.371e+006



¹³C-HpCB

N2ZW6 Smooth(Mn,1x1)

F2:Voltage SIR,EI+
405.8428
1.231e+006



¹³C-HpCB

N2ZW6 Smooth(Mn,1x1)

F2:Voltage SIR,EI+
407.8398
1.135e+006

