

# みんなで避難！沖縄市防災訓練

11月5日(水)は沖縄市防災訓練です。

!!! Important NOTICE !!!

## Okinawa City Earthquake & Tsunami Evacuation Drill on November 5

令和7年度沖縄市防災訓練開催

Okinawa City Disaster Prevention Drill Schedule 2025

Okinawa city disaster prevention drill will be held on Wednesday, November 5, 2025.

This citywide drill is simulating a major earthquake and tsunami in order to provide citizens an opportunity to think about how to survive in these occasions where to evacuate when major earthquake or tsunami occur. Please get your friends and family to participate this event to make sure the safe evacuation route again on foot in case of these situations.

【Date & Time】Wednesday, November 5 Starting 10:00 【Location】All area in the city

【Eligible Participants】All citizens (community associations, voluntary disaster management organizations, schools, nursery schools & daycare facilities, welfare service facilities, and more.

【Drill Description】

10:00 Shakeout drill will start as soon as the emergency earthquake warning (disaster prevention public alert system) is announced out.

10:03- Evacuation drill will start as soon as the emergency tsunami warning (emergency alert email/disaster prevention public alert system) is out.

11:30- The end of drill will be announced through disaster prevention public alert system.

■What is "Shakeout Drill"?

This is one of the earthquake preparedness drills that anyone can do anywhere, anytime. Practice it at home or at work so you are ready when disaster strikes.

まずひくく Drop あたまをまもり Cover うごかない Hold on

■Do not panic for mistaking this drill as a real disaster case!

You will hear sirens or alarm sound from emergency alert email/disaster prevention public alert system during the drill. Please do not panic for mistaking this drill as a real disaster case.

During the drill, some group of participants such as schools or nursery schools will walk to an actual evacuation site. Please maintain the safety of the route when you drive.

There is not application needed to participate in this drill. Please visit our website for details.

Contact: Disaster Prevention Section 防災危機管理担当 Ext. 5601



## ▶ Disaster Prevention Column vol.3 Disaster Prevention Tips vol.3 防災コラム 防災まめ知識

The Difference Between Tsunami Advisories and Warnings

We often hear terms like "tsunami advisory" and "tsunami warning" in the news. Do you know the difference between the two? Let's review what each indicates and how to respond when they are issued, so we can be prepared when disaster strikes.

Advisory注意報

In the ocean, people can be swept away by fast currents, aquaculture rafts may be lost, and small vessels may capsize. Anyone in the ocean should immediately get out of the water and move away from the shore. Gather information and prepare to evacuate.

Tsunami Warning / Major Tsunami Warning津波警報・大津波警報

Tsunamis will strike low-lying areas, causing flooding damage. People may be swept away by tsunami currents. Those in coastal areas or along rivers should immediately evacuate to higher ground, evacuation buildings, or other safe locations.

Information Gathering Methods

- TV and Radio
- Websites (Okinawa City, Japan Meteorological Agency, disaster prevention agencies, etc.)
- Disaster Prevention Administrative Radio (Broadcast content can also be confirmed by phone.

☐ 0120-0978-99)

●Emergency Alert (Area) Email

Disaster Prevention Section 防災危機管理担当 (Ext.5601or5602)



All services are provided in JAPANESE ONLY (unless otherwise indicated). For postal and emailing services, or any inquiries in ENGLISH, please email: [kokusai@city.okinawa.lg.jp](mailto:kokusai@city.okinawa.lg.jp)

Okinawa-shi Yakusho Bunka Geino Ka (B1) 26-1 Nakasone-Cho, Okinawa City, Okinawa 904-8501

## ▶Population Census FY2025 令和7年度国勢調査のお知らせ

The census provides essential data for vital policies that support our daily lives, such as childcare assistance, senior welfare, and community development. We kindly ask for your cooperation in responding to the survey.

Survey Respondents :

People and households including foreign nationals who are residing in Japan.

How to Answer the Questionnaire :

Once you receive the questionnaire sheet, please follow the three steps shown below:

①Scan the QR code which is printed on the questionnaire sheet to access the website to answer the questionnaire.

②Log in to the site (ID will be entered automatically).

③Answer the questionnaire.

※You can also answer on the paper questionnaire sheet and mail to the office or hand it to the survey researcher.

For inquiries regarding the survey:  
Census Contact Center (Navi Dial)  
0570-02-5901

Operating period: Until Friday, November 7

Hours: 9:00 AM to 9:00 PM (Available on weekends and holidays)

※For IP phones: 03-6628-2258

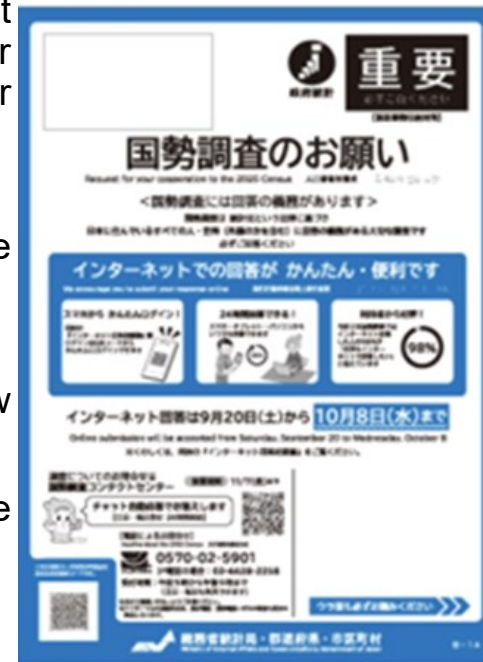
※Navi Dial call charges apply at the standard rate for both landlines and mobile phones.

※If you have not received survey documents, are missing a questionnaire, or wish to request direct collection of your questionnaire, please contact the following:

Contact: Population Census Headquarters, Okinawa City (B1, Okinawa City Hall)  
Statistics Section, DX Development Division (Ext. 2326/2327)

Statistics Bureau, Ministry of Internal Affairs and Communications official website /English

<https://www.kokusei2025.go.jp/about/en/>



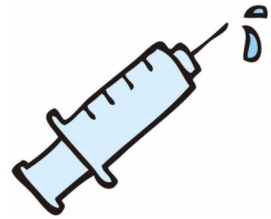
All services are provided in JAPANESE ONLY (unless otherwise indicated). For postal and emailing services, or any inquiries in ENGLISH, please email: [kokusai@city.okinawa.lg.jp](mailto:kokusai@city.okinawa.lg.jp)

Okinawa-shi Yakusho Bunka Geino Ka (B1) 26-1 Nakasone-Cho, Okinawa City, Okinawa 904-8501



★Influenza and COVID-19 Vaccinations インフルエンザ・新型コロナワクチン予防接種★

Starting October 1st, regular influenza and COVID-19 vaccinations will begin for the following individuals.  
Designated medical institutions and other latest information will be announced on the city's official website.



	Influenza	COVID-19
Eligibility	Any following individual who is registered as a resident of Okinawa City on the day of vaccination ①65歳以上の方型Individuals aged 65 and older ②Individuals aged 60 to under 65 with severe impairment of cardiac, renal, or respiratory function, or of immune function due to HIV, equivalent to Grade 1 on the Physical Disability Certificate.	
Vaccination Period	October 1, 2025 to February 28, 2026	
Vaccination Cost	Free (Fully covered by government)	Out-of-pocket cost: ¥3,000 *1
Number of Doses	1 dose *2	
Vaccination Site	Designated medical institutions	
Items to Bring for Vaccination	②Identification documents (health insurance card, My Number card, etc.) ② Notification postcard (to be sent sequentially to eligible individuals starting late September) The pre-vaccination questionnaire is available at designated medical institutions.	

※1 生活保護受給者の方は無料(全額公費負担)となります。Recipients of public assistance are exempt from fees (fully covered by public funds).  
※2 2回目以降の接種は任意接種となり、全額自己負担となります。Subsequent vaccinations are voluntary and require full self-payment.  
Contact: Child Consultation - Health Division (Ext. 2232or2233)



Treatment Support Program For Hypertension Disorders of Pregnancy 妊娠高血圧症候群等療養援護事業  
Okinawa Prefecture provides partial reimbursement for treatment costs based on income to low-income pregnant women (annual taxable income ≤ ¥15,000) hospitalized for 7 days or more due to pregnancy-induced hypertension or similar conditions.

※Services at the counter are provided in Japanese only. Please bring your own interpreter.  
Contact: Chubu Regional Public Health and Welfare Center  
TEL:098-938-9883

▶ The 20% copayment consideration measure will end. 2割負担の配慮措置が終了します。  
The burden reduction measures (consideration measures) for individuals subject to the 20% copayment under the Medical Care System For the Elderly, which had been in effect since October 1, 2022, will end on September 30, 2025.  
Please be advised that for medical services provided on or after October 1, 2025, the monthly out-of-pocket maximum for patients with a 20% copayment will change as shown below.

後期高齢者医療 2割負担 (一般□) の1か月の自己負担限度額  
Monthly out-of-pocket maximum for Medical Care for the Elderly with 20% copayment (General Category II)

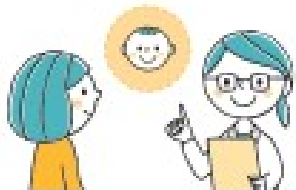
	Outpatient Maximum Amount (Per Individual)	Outpatient + Inpatient Maximum Amount (Per Household※1)
For medical services provided through September 30, 2025	①18,000yen ②¥6,000 + (100% of medical expenses - ¥30,000) × 10% The lower of □ or □ ※2	¥57,600 (¥44,400※3)
Effective for medical services provided on or after October 1, 2025	¥18,000※2	¥57,600 (¥44,400※3)

※1 Only individuals enrolled in the same public health insurance plan are combined as a household.  
※2 The annual limit (August to the July of the following year) is ¥144,000.  
※3 This is the monthly limit starting from the fourth month when a household has received high-cost medical expense benefits for three or more months within a 12-month period.

The 20% copayment consideration measure will end. (QR Code)  
Medical Care System for the Elderly, National Health Insurance Division( Ext.2101)

Financial Assistance for Fertility Treatment 不妊治療費助成事業

Okinawa City provides subsidies for part of the costs of fertility treatments such as in vitro fertilization and intracytoplasmic sperm injection.  
Amount of Subsidy:  
●Assisted reproductive technology: 50,000 yen once per fiscal year  
●Advanced medical care: Up to 50,000 yen per treatment  
Application Deadline: Tuesday, March 31, 2026  
For details, please check our official website.  
We provide a consultation service on your infertility and fertility treatment.  
Contact: Child Consultation - Health Division (Ext. 3084 or 3082)



Additional Eisa Vouchers 追加エイサー商品券

Additional Eisa vouchers will be mailed to eligible recipients by early December.  
Eligibility: Individuals meeting all of the following criteria □ through □.  
①Individuals registered as residents of Okinawa City as of January 1, 2025, and August 31, 2025  
Individuals born on or before April 1, 1961  
Individuals whose income for fiscal year 2025 was less than 1.2 million yen (including those who did not file a tax return) and whose household includes individuals subject to resident tax (including the applicant).  
Individuals whose household's total income for fiscal year 2025 was less than 4 million yen.  
※Eligibility criteria are determined on an individual basis. Even within the same household (family), some individuals may be ineligible.  
【Vouchers】¥500 × 16 sheets = ¥8,000(General vouchers共通券 are usable at all participating stores)  
Inquiries: Okinawa City Eisa Voucher Office TEL: 0120-025-125  
10:00 AM - 4:00 PM (Closed Dec 27 - Jan 4)



All services are provided in JAPANESE ONLY (unless otherwise indicated). For postal and emailing services, or any inquiries in ENGLISH, please email: [kokusai@city.okinawa.lg.jp](mailto:kokusai@city.okinawa.lg.jp)

Okinawa-shi Yakusho Bunka Geino Ka (B1) 26-1 Nakasone-Cho, Okinawa City, Okinawa 904-8501

All services are provided in JAPANESE ONLY (unless otherwise indicated). For postal and emailing services, or any inquiries in ENGLISH, please email: [kokusai@city.okinawa.lg.jp](mailto:kokusai@city.okinawa.lg.jp)

Okinawa-shi Yakusho Bunka Geino Ka (B1) 26-1 Nakasone-Cho, Okinawa City, Okinawa 904-8501